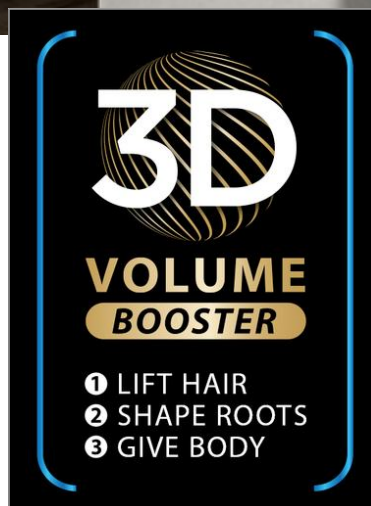


Rowenta®



Volumizer Hair Dryer
CV6135F0

Enter the new dimension of 3D volumizing

The Rowenta Volumizer Hair Dryer is an innovative styling solution that enhances your blowout with gorgeous volume, for looks and style that never fail to turn heads. Experience the triple-action benefits of the 3D Volume Booster system: Hybrid Technology for up to 40% higher airflow* that lifts at the roots, with the 8 mm concentrator for shaping and the volume diffuser for larger-than-life volume. Complete with a range of convenient features, discover a blow-dryer like no other.

**vs. Powerline CV59 range by the same manufacturer*

EDITORIAL DESCRIPTION

Rowenta Volumizer Hair Dryer: Triple-Action Drying

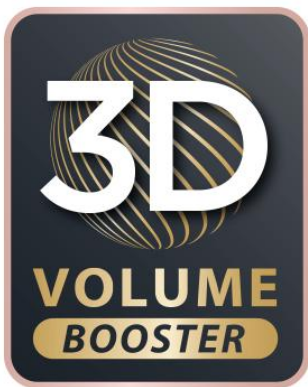
A game-changing blowout that takes styling to a whole new dimension: The Rowenta Volumizer Hair Dryer delivers triple-action drying, for robust airflow that lifts your roots while shaping and adding larger-than-life volume. The 3D Volume Booster system features Hybrid Technology offering all the benefits of a DC and AC motor in one, for up to 40% higher airflow* that lifts roots like no other. The 8 mm concentrator shapes as it dries, with the volume diffuser adding to your hair's natural body, vibrancy and fullness. The result is a blowout with an added boost of gorgeous, eye-catching volume, together with drying that never fails to deliver. 2400 Effiwatts of drying power ensures high-efficiency performance, with the Advanced Care setting and ionic generator leaving your hair smooth, manageable and enhanced with radiant shine. A premium design rounds off the package, for a compact, lightweight and quiet blow-dryer ensuring perfect results day after day.

ETAILING DESCRIPTION

Rowenta Volumizer Hair Dryer, 3D Volume Booster, Lifts Roots, Shapes, Boosts Natural Volume, Thin 8 mm Concentrator, Volume Diffusor, High-Performance 2400-Effiwatt Hybrid Motor, CV6130F0

- **3D VOLUME BOOSTER:** Discover triple-action drying for robust airflow that lifts your roots, with the 8 mm concentrator for shaping and the volume diffuser to boost your hair's natural volume
- **HYBRID TECHNOLOGY:** A hair dryer with all the benefits of a DC and AC motor offering 40% higher airflow* and drying power that lifts at the roots [*vs. Powerline CV59 range by the same manufacturer]
- **SHAPE YOUR ROOTS:** Combined with a round hairbrush in an effortless and intuitive motion, the thin concentrator uses precise airflow to shape and boost volume at the roots
- **NATURAL VOLUME BOOSTING:** Gorgeous, larger-than-life results with an exceptional volume diffuser that adds body, vibrancy and fullness
- **HIGH-PERFORMANCE DRYING:** The advanced technology of our Hybrid motor comes together with 2400 Effiwatts of drying power, for a seamless blow-out with high-efficiency results
- **SHINE AND CARE:** The Advanced Care setting combined with an ionic generator for all-natural shine, smoothness and hair protection
- **PREMIUM DESIGN:** Delivering ultimate ease and comfort, discover a compact, lightweight blow-dryer with advanced sound-dampening technology for more silent drying

PRODUCT BENEFITS



3D Volume Booster

Discover a triple-action blow-out: robust airflow that lifts at the roots, with the 8 mm concentrator for shaping and the volume diffuser to boost your hair's natural volume.

Drying that lifts at the roots

Hybrid Technology puts the best of both worlds within reach, with all the benefits of a DC and professional AC motor in one, for high-performance airflow that lifts at the roots to add volume.



Roots shaped to perfection

Combined with a round hairbrush in an effortless and intuitive motion, the thin concentrator uses precise airflow to shape and boost volume at the roots.

Boost your natural volume

Give your hair's natural volume a boost—for gorgeous, larger-than-life results that add body, vibrancy and fullness—thanks to the volume diffuser.



High-performance drying

The outstanding technology of our Hybrid motor comes together with 2400 Effiwatts of drying power, for a seamless blow-out with high-efficiency results.

Shine and care

Optimal temperature levels help maintain your hair's natural moisture, together with the Ionic generator's frizz and static-reducing effect, for smooth hair enhanced with a radiant glow.



Exceptional design

Delivering a smooth experience with total ease and comfort, discover a compact, lightweight hair dryer offering more silent drying.

Repairable at fair price - 15 years

- 6200 approved repairers worldwide



PRODUCT PHOTOS

Other product packshots - H2



Packaging 3D



IFU



PRODUCT FEATURES**RESULT/ USAGE**

➤ Power	1800 W
➤ Performance	2400 Effiwatts
➤ Air speed (km/h)	120
➤ Concentrator dimension	8 mm
➤ Temperature settings	3
➤ Speed settings	2
➤ Cool air shot	YES
➤ Concentrator	1
➤ Diffuser type	Standard
➤ Diffuser	Yes

HAIR RESPECT AND ERGONOMY

➤ Ionic function	YES
------------------	-----

ERGONOMY/COMFORT OF USAGE

➤ Motor type	Hybrid motor
➤ Removable grid	YES
➤ Hanging loop	YES
➤ Eco energy	Yes

TECHNICAL SPECIFICATIONS

➤ Voltage	230 V
➤ Power cord length	1.8 m
➤ Others	Fixed cool shot
➤ Colours	White & Rooibos

NEED

➤ Others	Fixed cool shot
----------	-----------------

HAIR RESULT

➤ Fast drying	Yes
➤ Volume	Yes
➤ Shaping	Yes

➤ Country of origin	China
---------------------	-------

LOGISTICS DATA**CMMF : 1830008437**

EAN CODE	PCS / PARCEL	PCS / LAYER	LAYER / PALLET	PCS / PALLET	PCS / CONTAINER
EAN ST : 3121040084373 EAN UC :	6	24	3	72	C20 : 3 780 C40 : 7 800 HQ4 : 9 240

	UNPACKED PRODUCT	PACKED PRODUCT	STANDARD PARCEL	PALLET
DIMENSIONS (D x W x H)	177 x 96 x 281 (mm)	220 x 100 x 285 (MM)	455 x 315 x 305 (MM)	1 200 x 800 x 1 049 (MM)
WEIGHT	0.608 (KG)	1,117 (KG)	6,7 (KG)	101,4 (KG)

RELATIONS**CMMF : 1830008437**

Switch (replace)	
Switch (is replaced by)	
Cross-sell	
Accessories	
Linked to finished products	