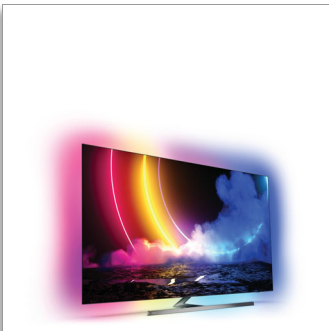




Philips OLED  
4K UHD OLED Android  
TV

P5 AI perfect picture engine

Dolby Atmos sound  
4-sided Ambilight TV  
139 cm (55") Android TV



55OLED856

## Uniquely immersive. Completely beautiful.

### 4K UHD OLED Android TV

The thrillingly realistic picture on this gorgeous OLED TV combines with immersive 4-sided Ambilight to create cinema-sized excitement. Whatever you watch or play, the action will leap from the screen-right into your living room.

#### **Designed to mesmerize.**

- This is what lifelike feels like. Philips OLED TV.
- All-round immersion. 4-sided Ambilight.
- Premium design. From stand to remote.

#### **Smooth motion. True color. Incredible depth.**

- Whatever you watch, a picture so real. P5 engine with AI.
- Cinematic vision and sound. Dolby Vision and Dolby Atmos.
- Vibrant HDR picture. Philips 4K UHD TV.
- Great for gaming. Ultra-low latency on any console.

#### **Content at your command.**

- Simply smart. Android TV.
- Voice control. The Google Assistant. Works with Alexa.
- Multi-room audio. DTS Play-Fi

# PHILIPS

4K UHD OLED Android TV  
P5 AI perfect picture engine Dolby Atmos sound, 4-sided Ambilight TV, 139 cm (55") Android TV

55OLED856/12

# Highlights

## 4-sided Ambilight



With Philips 4-sided Ambilight, every moment feels closer. Intelligent LEDs around the edge of the TV respond to the on-screen action and emit an immersive glow that's simply captivating. Experience it once and wonder how you enjoyed TV without it.

## P5 engine with AI



Philips P5 processor with AI delivers a picture so real it feels like you could step right into it. A deep-learning AI algorithm processes images in a manner similar to the human brain. No matter what you're watching, you get lifelike detail and contrast, rich color, and smooth motion.

## Philips OLED TV



With a Philips OLED TV, you get a wider viewing angle and a uniquely lifelike picture. Blacks are deeper. Colors are truer. Details in

shadows and highlights are precisely reproduced. All major HDR formats are supported. You'll feel the full power of every scene.

## Dolby Vision + Dolby Atmos



Support for Dolby's premium sound and video formats means the HDR content you watch will look-and sound-glorious. You'll enjoy a picture that reflects the director's original intentions and experience spacious sound with real clarity and depth.

## Premium materials

Every inch of this TV looks and feels premium. The ultra-thin metal bezel. The metal T-bar stand in dark chrome. Or the soft, textured leather-backed remote with backlit keys-which is as good to hold as it is to use.

## Simply smart. Android TV



Your Philips Android TV gives you the content you want-when you want it. You can customize the home screen to display your favorite apps, making it simple to start streaming the movies and shows you love. Or pick up where you left off.

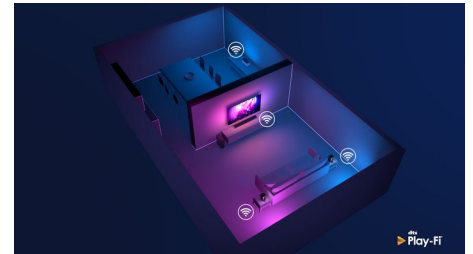
## HDMI 2.1 VRR and low latency



## Ready for gaming

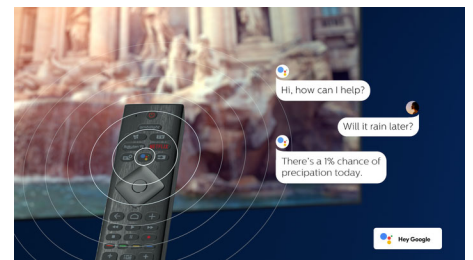
Your Philips TV boasts the latest HDMI 2.1 connectivity and automatically switches to an ultra-low-latency setting when you start playing a game on your console. VRR and Freesync are supported for smooth fast-action gameplay. Ambilight's gaming mode brings the thrill right into the room.

## DTS Play-Fi compatible



With DTS Play-Fi on your Philips TV you can connect to compatible speakers in any room. Got wireless speakers in the kitchen? Listen to the movie while you make a snack or keep up with the sports commentary while you get everyone drinks.

## AI voice control



Push a button on the remote to talk to the Google Assistant. Control the TV or Google Assistant-compatible smart home devices with your voice. Or ask Alexa to control the TV via Alexa-enabled devices.



# Specifications

## Ambilight

- Ambilight Version: 4-sided
- Ambilight Features: Built in Ambilight+hue, Ambilight Music, Game Mode, Wall colour adaptive, Lounge mode, AmbiWakeup, AmbiSleep, Philips Wireless Home Speakers

## Picture/Display

- Display: 4K Ultra HD OLED
- Diagonal screen size: 55 inch / 139 cm
- Panel resolution: 3840x2160
- Aspect ratio: 16:9
- Pixel engine: P5 AI Perfect Picture Engine
- Picture enhancement: Ultra Resolution, Wide Color Gamut 99% DCI/P3, Dolby Vision, HDR10+, Perfect Natural Motion, A.I. PQ mode, CalMAN Ready, ISF Color Management, Micro Dimming Perfect

## Supported Display Resolution

- Computer inputs on all HDMI: up to 4K UHD 3840x2160 @60Hz, HDR supported, HDR10+/HLG, HDR supported, HDR10/ HLG
- Video inputs on all HDMI: up to 4K UHD 3840x2160 @60Hz, HDR supported, HDR10/ HLG (Hybrid Log Gamma), HDR10+/Dolby Vision

## Android TV

- OS: Android TV™ 10 (Q)
- Pre-installed apps: Google Play Movies\*, Google Play Music\*, Google Search, YouTube, Amazon instant video, BBC iplayer, Netflix, Amazon Prime Video, Disney+, Fitness App, Spotify
- Memory size(Flash): 16GB\*

## Smart TV Features

- Interactive TV: HbbTV
- Program: Pause TV, USB recording\*
- Ease of Installation: Auto detect Philips devices, Network installation wizard, Settings assistant wizard, Device connection wizard
- Ease of Use: One-stop smart menu button, Onscreen usermanual
- Firmware upgradeable: Firmware auto upgrade wizard, Firmware upgradeable via USB, Online firmware upgrade
- Screen Format Adjustments: Basic - Fill Screen, Fit to screen, Advance - Shift, Zoom, stretch, Wide screen
- Remote Control: with Voice, with Key light, with

- Muirhead leather
- User Interaction: SimplyShare
- Voice assistant\*: Google Assistant built-in, RC with Mic., Works with Alexa

## Processing

- Processing Power: Quad Core

## Tuner/Reception/Transmission

- HEVC support
- Digital TV: DVB-T/T2/T2-HD/C/S/S2
- MPEG Support: MPEG2, MPEG4
- Video Playback: PAL, SECAM
- TV Program guide\*: 8 day Electronic Program Guide
- Signal strength indication
- Teletext: 1000 page Hypertext

## Connectivity

- Number of HDMI connections: 4
- Number of USBs: 3
- Wireless connections: Wi-Fi 802.11ac, 2x2, Dual band, Bluetooth 5.0
- Other connections: Common Interface Plus (CI+), Digital audio out (optical), Ethernet-LAN RJ-45, Headphone out, Satellite Connector, Service connector
- HDMI features: 4K, Audio Return Channel
- EasyLink (HDMI-CEC): Remote control pass-through, System audio control, System standby, One touch play
- HDCP 2.3: Yes on all HDMI
- HDMI ARC: Yes for all ports
- HDMI eARC: Yes on HDMI2
- HDMI VRR: FreSync Premium Pro, Yes on HDMI1 & HDMI2

## Multimedia Applications

- Video Playback Formats: Containers: AVI, MKV, H264/MPEG-4 AVC, MPEG-1, MPEG-2, MPEG-4, VP9, HEVC (H.265), AV1
- Subtitles Formats Support: .SRT, .SUB, .TXT, .SMI
- Music Playback Formats: AAC, MP3, WAV, WMA (v2 up to v9.2), WMA-PRO (v9 and v10)
- Picture Playback Formats: JPEG, BMP, GIF, PNG, 360 photo, HEIF

## Power

- Mains power: AC 220 - 240 V 50/60Hz
- Standby power consumption: <0.3W

- Off mode power consumption: N/A W
- Ambient temperature: 5 °C to 35 °C
- Power Saving Features: Auto switch-off timer, Light sensor, Picture mute (for radio), Eco mode
- Energy Label Class: tbd
- Mercury content: 0 mg
- Presence of lead: Yes\*

## Sound

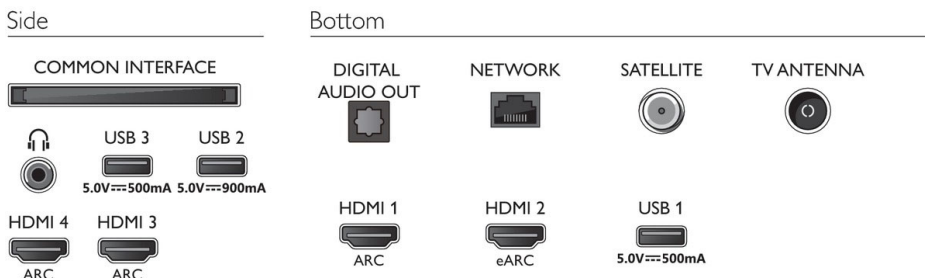
- Audio: Output power : 50 Watt (RMS), 2.1 Channel
- Codec: AC-4, Dolby Atmos, DTS-HD(M6), Dolby Digital MS12 V2.5
- Speaker configuration: 10Wx2 mid-high speaker, 30W sub-woofer
- Sound Enhancement: A.I. Sound, Clear Dialogue, Dolby Atmos, Dolby Bass Enhancement, Dolby Volume Leveler, Night mode, A.I. EQ, DTS Play-Fi, Mimi Sound Personalization

## Dimensions

- VESA wall mount compatible: 300 x 300 mm



## Connections



Issue date 2021-01-13

Version: 1.3.1

12 NC: 8670 001 75018  
EAN: 87 18863 02901 5

© 2021 Koninklijke Philips N.V.  
All Rights reserved.

Specifications are subject to change without notice. Trademarks are the property of Koninklijke Philips N.V. or their respective owners.

[www.philips.com](http://www.philips.com)

\*Memory size (Flash) : 16G, the actual available disc space may differ (dependant on e.g. (pre-)installed apps, installed operating system, etc.)

\*EPG and actual visibility (up to 8 days) is country and operator dependent.

\* Android App offerings vary per country. For more details please visit your local Google Play Store.

\* Energy consumption in kWh per year, based on the power consumption of the television operating 4 hours per day for 365 days. The actual energy consumption will depend on how the television is used.

\* The TV supports DVB reception for 'Free to air' broadcast. Specific DVB operators may not be supported. An up to date list can be found in the FAQ section of the Philips support website. For some operators Conditional Access and subscription are required. Contact your operator for more information.

\* Philips TV Remote app and related functionalities vary per TV model, operator, and country, as well as smart device model and OS. For more details please visit: [www.philips.com/TVRemoteapp](http://www.philips.com/TVRemoteapp).

\* Smart TV app offerings vary per TV model and country. For more details please visit: [www.philips.com/smarttv](http://www.philips.com/smarttv).

\* USB recording for digital channels only, recordings may be limited by broadcast copy protection (CI+). Country and channel restrictions may apply.

\* This television contains lead only in certain parts or components where no technology alternatives exist in accordance with existing exemption clauses under the RoHS Directive.

\* Amazon, Alexa and all related logos are trademarks of Amazon.com, Inc. or its affiliates. Amazon Alexa is available in selected languages and countries.

\* Amazon Prime is available in selected languages and countries.

\* Disney+ subscription required. Subject to terms at <https://www.disneyplus.com> (c) 2020 Disney and its related entities. Disney+ is available in selected languages and countries.

\* Google Assistant is available on Philips Android TVs running on Android O (8) or higher OS version. Google Assistant is available in selected languages and countries.

\* Netflix subscription required. Subject to terms at <https://www.netflix.com>

\* Rakuten TV is available in selected languages and countries.

\* Cloud Gaming offering depends on game providers.