

Moulinex®

kettle

Be stylish in your kitchen, too!



A ray of sunshine in your kitchen

Simplicity meets style for a fresh kitchen aesthetic and a total look on your countertop!



Large 1.7 L capacity for the whole family

Offering up to 7 cups, its generous 1.7 L capacity is perfect for sharing hot beverage moments with family and friends.

1.7L

2400 W of power

The kettle's 2400 W of power ensure delicious hot beverages.

2400 W

Hinged lid for easy filling and cleaning

The convenient hinged lid makes filling and cleaning your kettle both practical and easy.



Concealed heating element

The concealed heating element provides a smooth surface, for easier cleaning of the kettle interior.



Dual water-level indicator for easy monitoring

Keep track of the precise amount of water in your kettle at just a glance, thanks to the convenient water-level indicator on both sides.



Removable anti-scale filter for easy cleaning

The removable anti-scale filter makes cleaning your kettle easy, for cleaner water and delicious tea and coffee in turn.



Precision spout for no-spills pouring

The precision spout ensures perfect pouring every time, free from spills and drips.



KET SOLEIL 1.7L BY320
BY320E10



Technical Characteristics

MAIN FEATURES

Capacity	1.7 L
Design & Material	Plastic
Time to boil	Average 121 - 150 seconds

OTHER FEATURES

Power	2000-2400 W
Body material	Plastic
Limescale Filter	Removable
Water level indicator	Yes
Lid	Manual
360 degree rotational base	Yes
Heating element	Concealed
Cord Storage	Yes
Spout filling	Yes
On/Off Switch	Yes
Indicator light	Yes
Temperature selector	Mechanical
Cordless	Yes
Automatic stop	Yes
Colours	pepper
Type of plug	EUR
Plug Color	BLACK
Plug Shape	Right Angle Plug

Country of origin : China

Illuminated On/Off button with Auto-off

The On/Off button with indicator light clearly shows when the device is on, while the Auto-off feature ensures convenient, forget-and-go use.



360° rotational base for added convenience

The 360° rotational base keeps the cordless kettle firmly in place, for added convenience.



Repairable at fair price - 15 years

- 6200 approved repairers worldwide



SHORT DESCRIPTION

Welcome your sense of style into your kitchen, with the Moulinex Soleil kitchen range. Offering simple lines and a fresh, friendly aesthetic, it brings a ray of sunshine to your kitchen and a total look to your countertop. The electric kettle's range of dedicated, convenient features ensures delicious hot beverages for the whole family.

EDITORIAL DESCRIPTION

Moulinex Soleil kettle: Be stylish in your kitchen, too!

Express your sense of style with a kitchen range that brings a total look to your countertop. The Soleil kettle's simple lines and fresh aesthetic are a welcome ray of sunshine to brighten up even the most stylish of kitchens. Featuring a generous 1.7 L capacity that accommodates up to 7 cups and 2400 W of power, it's perfect for sharing moments with family and friends. Its convenient hinged lid makes filling and cleaning easy, while inside a concealed heating element ensures easier clean-up as well. This design kettle is also equipped with a dual water-level indicator for clear and simple monitoring from any angle, a removable anti-scale filter for cleaner water and more delicious drinks, and a precision spout for no-spills pouring. Rounding it all off is an illuminated On/Off switch with Auto-off for convenient forget-and-go use, as well as a 360° rotational base that keeps the cordless electric kettle firmly in place. With Moulinex Soleil, be stylish in your kitchen, too!

ETAILING DESCRIPTION

MOULINEX KET SOLEIL 1.7L BY320 BY320E10

• Soleil kettle: be stylish in your kitchen, too • A ray of sunshine in your kitchen: simplicity meets style for a fresh kitchen aesthetic • Large 1.7 L capacity for the whole family: up to 7 cups • 2400 W of power • Hinged kettle lid for easy filling and cleaning • Concealed heating element for easier cleaning • Dual water-level indicator for easy monitoring at just a glance • Removable anti-scale filter for easy cleaning and cleaner water • Precision spout for no-spills pouring • Illuminated On/Off button with Auto-off for forget-and-go use • 360° rotational base keeps the cordless kettle firmly in place, for added convenience

EAN CODE	PCS / PARCEL	PCS / LAYER	LAYER / PALLET	PCS / PALLET	PCS / CONTAINER
EAN ST : 3045387247393 EAN UC : 3045387247393	3	18	4	72	C20 : 2 232 C40 : 4 560 HQ4 : 5 130

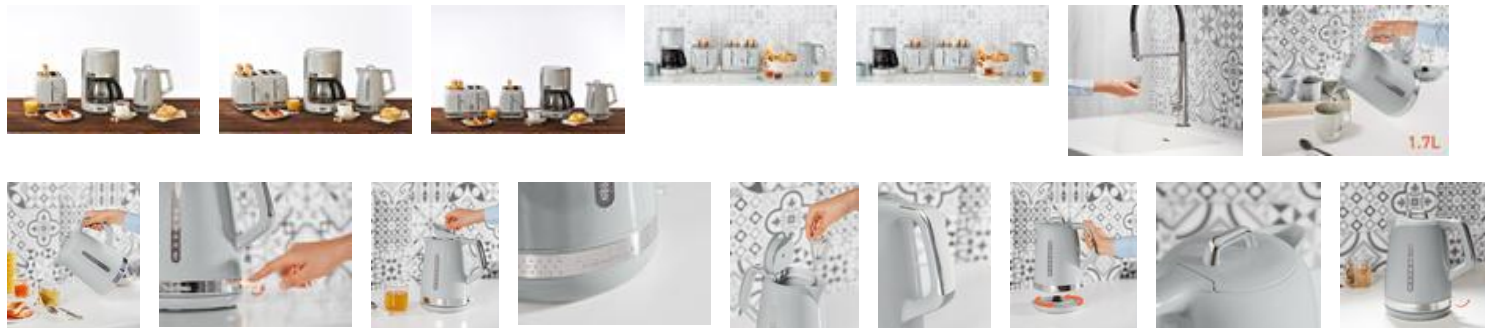
	UNPACKED PRODUCT	PACKED PRODUCT	STANDARD PARCEL	PALLET
DIMENSIONS (D x W x H)	228 x 165 x 233 (mm)	221 x 191 x 246 (MM)	590 x 240 x 269 (MM)	1 200 x 800 x 1 210 (MM)
WEIGHT	0.96 (KG)	1,453 (KG)	4,36 (KG)	125,64 (KG)

PRODUCT PHOTOS

Other product packshots - H2



Product benefits - Picture with captions



IFU

