

Quick Installation Guide

AC1200 Wireless Dual Band USB Adapter
MODEL NO. Archer T4U

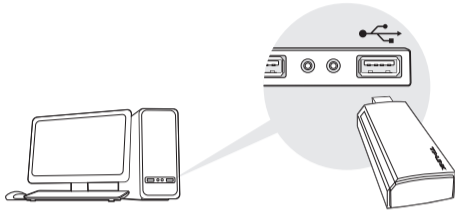
For more information, please visit our website
<http://www.tp-link.com>
7106505845 REV4.1.0



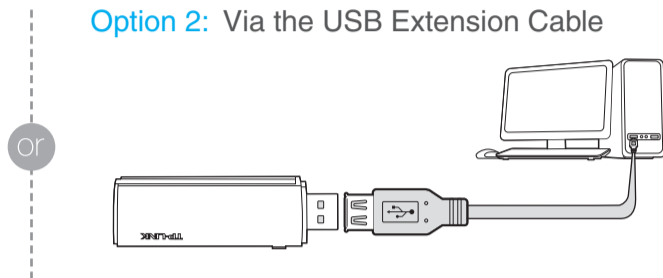
Downloaded from www.vandenborre.be

1 Connect to a Computer

Option 1: Directly



Option 2: Via the USB Extension Cable



Note: In Windows XP, a Found New Hardware Wizard window will appear when the adapter is detected. Please click Cancel.

2 Install Driver and Utility

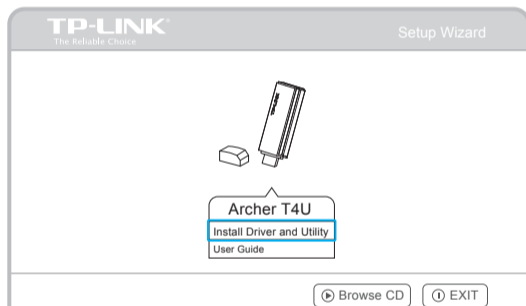
You can also download the driver and utility at www.tp-link.com.

① Insert the CD.



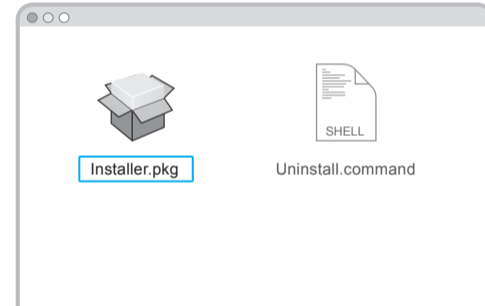
② For Windows

Run the **Autorun.exe** on the pop-up window.
Select **Archer T4U** and click **Install Driver and Utility**, then follow the InstallShield Wizard to complete the installation.



For Mac OS X

Browse the CD, go to **Archer T4U > Mac OS X Driver**, unzip the **Mac OS X version.zip** file and run the **Installer**.
Follow the wizard to complete the installation.

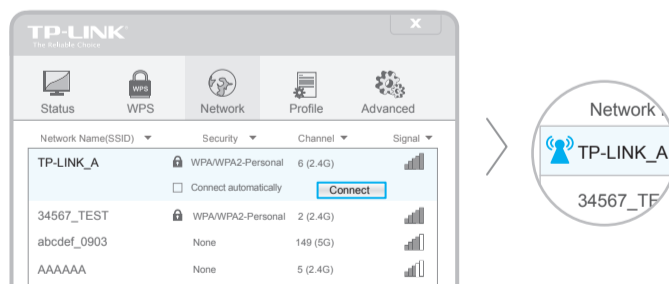


3 Join a Wireless Network

For Windows

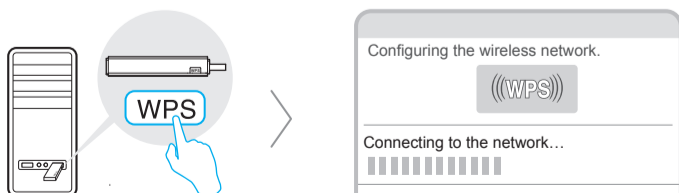
Option 1: Via TP-LINK Utility

Select your Wi-Fi network from the pop-up utility window and click **Connect**. The symbol indicates a successful connection.



Option 2: Via Wi-Fi Protected Setup (WPS)

- A: Press the WPS button on your router.
- B: Within 2 minutes, press and hold the WPS button on the adapter until the following screen appears.



C: When you are prompted "Successfully connected to the network by WPS!", click **OK**.

Option 3: Via Windows Wireless Utility

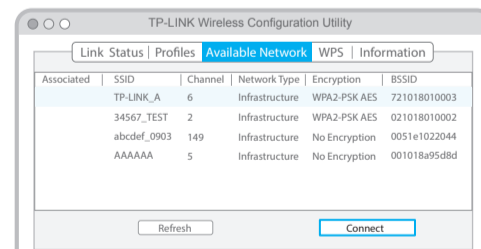
Click (Network icon) on the system tray, select your Wi-Fi network, and click **Connect**.

Note: In Windows XP, you need to close the TP-LINK Utility before using the Windows Wireless Utility.

For Mac OS X

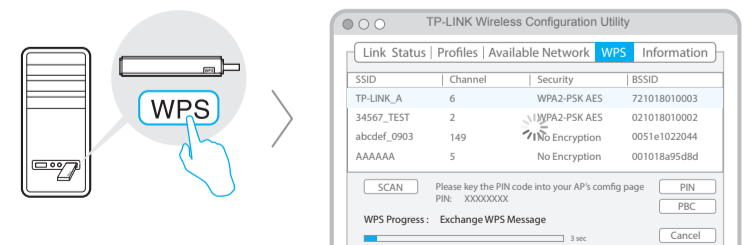
Option 1: Via TP-LINK Utility

- A: Select the **Available Network** tab of the pop-up utility window.
- B: Select your Wi-Fi network and click **Connect**. The connection status can be viewed on the Link Status screen.



Option 2: Via Wi-Fi Protected Setup (WPS)

- A: Press the WPS button on your router.
- B: Within 2 minutes, press and hold the WPS button on the adapter until the following screen appears.



C: When you are prompted "WPS Protocol Finished", click **OK**.