

# Moulinex®



**Moulinex®**  
BLENDER PORTABLE

**Lightmix, Portable Blender, 300ml, Powerful**  
Lightmix, Portable Blender, 300ml, Powerful, Eucalyptus  
LM1C0410

## **A healthier lifestyle whenever—and wherever—you want!**

With the Lightmix portable blender, fresh smoothies, shakes and more are just a press away. Its powerful yet quiet design delivers outstanding results in just 40 seconds, perfect for everything from cold soups and dips to sauces and dressings bursting with vitamins and nutrients. And all this in a durable, leak-proof design. Simply add ingredients with a little water or milk, then press the ON button twice—that's all there is to it! Take it anywhere, for a healthier lifestyle on the go.

## EDITORIAL DESCRIPTION

### Enjoy a healthier lifestyle—any time, any place!

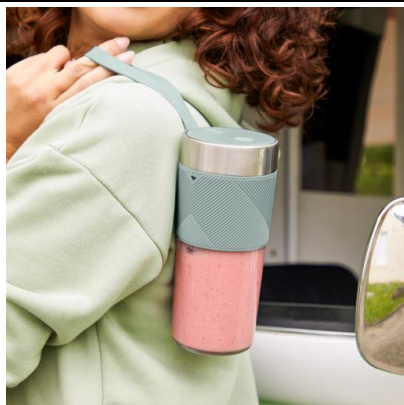
Discover powerful blending in the palm of your hand with the Lightmix, the quiet portable blender. Mix and drink on the go—wherever you are—be it at home, in the office, at the gym or while traveling. Lightmix is made from unbreakable Tritan with a leak-proof design. Simply toss it in your bag and go! From smoothies and shakes to cold soups, dressings, sauces and more, achieve a healthier lifestyle filled with fresh vitamins and nutrients.

## ETAILING DESCRIPTION

### Moulinex Lightmix, Portable Blender, 300 ml, Eucalyptus LM1C0410

- **TAKE ANYWHERE:** The lightweight, compact and easy-to-carry portable blender with soft silicon handle and 300 ml capacity—ideal to mix and drink in the park, at the gym or anywhere on the go
- **POWERFUL YET QUIET:** High-performance yet quiet blending—for outstanding, disturbance-free results in just 40 seconds, thanks to two high-quality stainless steel blades
- **MORE THAN SMOOTHIES:** More than a smoothie blender, prepare everything from protein shakes and cold soups to yummy dips, sauces and dressings—all packed with vitamins and nutrients
- **RELIABLE:** The fully leakproof 300 ml cup has been engineered from unbreakable Tritan—toss it in your bag with total peace of mind
- **15-YEAR REPAIRABILITY:** Low-cost parts available in our 6200 repair centers worldwide, for quick repair over many years—part of our commitment to help protect the environment and cut down on waste
- **LONG-LASTING AUTONOMY:** Enjoy up to 11 blending cycles per charge thanks to a high-quality 1,200 mAh lithium-ion battery and an included charging cable with magnetic connector and USB exit
- **EFFORTLESS:** Simply add your ingredients with a little water or milk, then press the ON button twice—Lightmix automatically stops after 40 seconds
- **EASY TO CLEAN:** Just fill with water and a drop of dish soap, start the blending cycle and it's done—or for more thorough cleaning, enjoy removable blades and a dishwasher-safe cup
- **SAFE:** Lightmix only runs when its lid is properly screwed on, ensuring total safety for you and your loved ones
- **WHAT'S IN THE BOX:** Lightmix motor base with 2 stainless steel blades, 300 ml Tritan On-the-Go cup, USB charging cable with magnetic connector

## PRODUCT BENEFITS

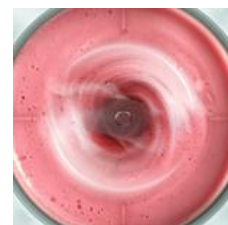


### Take anywhere!

Lightmix is the lightweight, compact and easy-to-carry portable blender with a 300 ml capacity—ideal to mix and drink wherever life takes you.

### Powerful yet quiet

Enjoy high-performance yet quiet blending thanks to stainless steel blades. Outstanding results in just 40 seconds!



### More than smoothies

Prepare everything from protein shakes and cold soups to yummy dips, tasty sauces and dressings—all packed with vitamins and nutrients.

**Reliable**

The fully leak-proof 300 ml cup has been engineered from unbreakable Tritan—toss it in your bag with total peace of mind.

**Long-lasting autonomy**

Enjoy up to 11 blending cycles per charge thanks to a high-quality 1,200 mAh lithium-ion battery and a charging cable with magnetic connector.

**Effortless**

Simply add your ingredients with a little water or milk, then press the ON button twice—Lightmix automatically stops after 40 seconds.

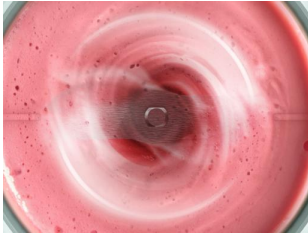
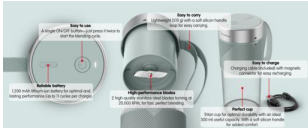
**Easy to clean**

Fill with soapy water, start the blending cycle and it's clean! Or for more thorough washing, enjoy removable blades and a dishwasher-safe cup.

**Safe**

Lightmix only runs when its lid is properly screwed on, ensuring total safety for you and your loved ones.





**Reliable battery**

1,200 mAh lithium-ion battery for optimal and lasting performance (up to 11 cycles per charge).

**High-performance blades**

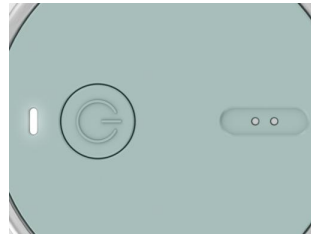
2 high-quality stainless-steel blades turning at 20,000 RPM, for fast, perfect blending.

**Perfect cup**

Tritan cup for optimal durability with an ideal 300 ml useful capacity. With a soft silicon handle for added comfort.

**Easy to carry**

Lightweight (510 g) with a soft silicon handle loop for easy carrying.



**Easy to charge**

Charging cable (included) with magnetic connector for easy recharging.

**Easy to use**

A single ON/OFF button—just press it twice to start the blending cycle.

**PRODUCT PHOTOS**

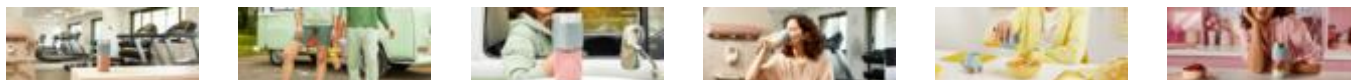
*Other product packshots - H2*



**Premium banner desktop**



**Slider Desktop**



**Product benefits - Picture with captions**



**Video carousel**



**Packaging 3D**



**IFU**



**PRODUCT FEATURES****MAIN FEATURES**

➤ Colours BLUE

**OTHER FEATURES**

➤ Colours BLUE

➤ Type of plug EUR

➤ Plug Color BLACK

➤ Country of origin China

**LOGISTICS DATA****CMMF : 8010001305**

EAN CODE	PCS / PARCEL	PCS / LAYER	LAYER / PALLET	PCS / PALLET	PCS / CONTAINER
EAN ST : 3016661178139 EAN UC :	8	112	2	224	C20 : 6 176 C40 : 12 608 HQ4 : 14 168

	UNPACKED PRODUCT	PACKED PRODUCT	STANDARD PARCEL	PALLET
DIMENSIONS (D x W x H)		134 x 110 x 252 (MM)	282 x 230 x 526 (MM)	1 200 x 800 x 1 196 (MM)
WEIGHT	0.53 (KG)	0,785 (KG)	6,28 (KG)	175,84 (KG)

**RELATIONS****CMMF : 8010001305**

Switch (replace)	
Switch (is replaced by)	
Cross-sell	
Accessories	
Linked to finished products	