

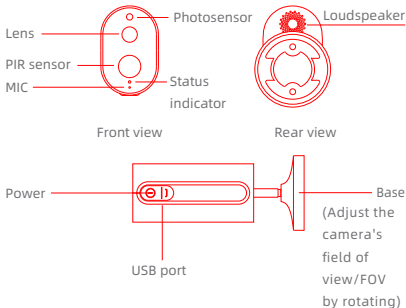


IMILAB Wire-Free Home Security Camera
& IMILAB Wire-Free Camera GateWay

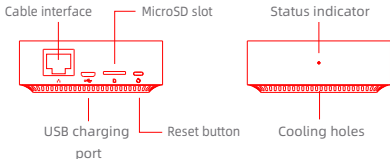
User Manual

Read this manual carefully before use, and retain it for future reference

Product Overview



Note: The protective film of PIR sensor is easy to be scratched, do not touch it easily. Slight wear will not affect the use.



Note: Use MicroSD cards produced by reliable manufacturers (maximum support capacity is 64G, only support FAT32 format). It is recommended that the memory card read and write speed should be no lower than U1/Class10.

Note: Install the gateway between the router and the camera.

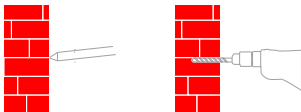
Packing content: IMILAB Wire-Free Home Security Camera, IMILAB Wire-Free Camera GateWay, network cable, power cord, wall mounting accessories pack (including expansion screw pack), power adapter, user manual, camera bracket

Product Installation

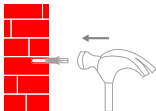
Within the coverage of gateway signal, IMILAB Wire-Free Home Security Camera can be installed indoor using wall accessories or outdoor, without power socket. Place gateway nearby router, distance between camera and gateway should be 1~15 meters (no shelter or interference).

Installation on wall

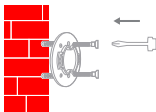
1. Drill two holes on the wall by using the XX of the camera as a template. It is recommended that you mark the locations of the holes with a pencil before drilling. The diameter of each hole is approximately 0.6cm, and the depth is approximately 2.5cm.



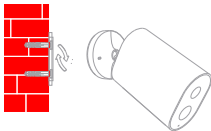
2. Insert the two anchors in the holes on the wall.



3. Make sure to position the gasket and then secure it in place by tightening the screws into the plastic anchors.



4. Match the grooves on the bottom of the camera with the raised area on the gasket. Press down until the two surfaces are flush, then turn the camera in either direction to lock it in position.



When mounting the security camera on a wall:

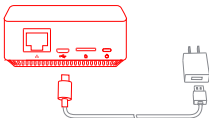
- To prevent accidental injury, the device must be securely anchored to the wall following the instructions. The wall must be able to support at least triple the product's total weight.
- Don't install device near any heat source such as air conditioner external unit, air outlet of both range hood and gas water heater, etc.
- Don't place device in rainy environment to work for long time.

Note: If the device is not installed following the instructions, damage caused thereof is not covered under the warranty.

Turning the Gateway On

Gateway power on

Step one: Connect one end of the power cord into the USB port at the back of gateway and the other end into the power.



Step two: After electrified, check gateway status according to indicator status. Yellow light indicates that the gateway is starting up; flashing yellow light indicates that the gateway is waiting for connection.

Connect with Mi Home / Xiaomi Home App

This product works with Mi Home / Xiaomi Home app*. Control your device with Mi Home / Xiaomi Home app. Scan the QR code to download and install the app. You will be directed to the connection setup page if the app is installed already. Or search "Mi Home /



Xiaomi Home" in the app Store to download and install it. Open Mi Home / Xiaomi Home app, tap "+" on the upper right, and then follow prompts to add your device.

* The app is referred to as Xiaomi Home app in Europe (except for Russia). The name of the app displayed on your device should be taken as the default.

Note: The version of the app might have been updated, please follow the instructions based on the current app version.

- Add gateway

Method one: Open the home page of Mi Jia app, click "+" in the upper right corner to enter Add device page, click the button "📶" in the upper right corner and quickly add gateway by scanning the QR code on the previous page or the QR code on the bottom of the camera.

Method two: Open the home page of Mi Jia app, click "+" in the upper right corner to enter Add device page, scan nearby devices (Android users only) or manually enter "IMILAB Wire-Free Camera GateWay" into the search box to add device.



Note:

The diagram is for reference only. Actual displays will vary based on different versions of the Mi Home platform and your smartphone model.

Configure the account and password of wireless network following the instructions in the app. Blue light indicates that gateway is connected, flashing yellow light indicates that connection failed. After wireless network is configured, the gateway will automatically switch to wired connection when users connect the network cable into the interface at the back of gateway, network transmission rate and stability can be improved.

- Gateway/Camera reset

Gateway: Long press the reset button for 8 seconds, indicator flashes yellow, gateway is successfully reset.

Camera: Long press the power button for 8 seconds, indicator flashes blue, camera is successfully reset.

- Add camera

Click "IMILAB Wire-Free Camera GateWay" in the home page of Mi Jia app to enter Add Camera page, click "Add now", long press the camera power button for 2 seconds, then the camera is ready to connect, the indicator is flashing blue; click "Next", then the gateway is ready to connect, the indicator is flashing blue. Connect the camera following the steps in the App. If successfully connected, APP will prompt "Connected".



When connecting and in use, keep a distance of over 1 meter between the camera and the gateway.

Note:

The diagram is for reference only. Actual displays will vary based on different versions of the Mi Home platform and your smartphone model.

About works with mijia

“works with mijia” signifies that the product herein is designed to connect and interact with Mi Home app or Mi AI. Please be noted that the product herein is certified by the app interaction only. Xiaomi and Mijia are not responsible for any of the product manufacturing, safety and regulatory standards, or quality supervision.



Indicator Light

- Gateway indicator status (connect with Mi Jia app)

Device status	Light status
Power plugged in	Steady yellow on
Connecting	Flashing blue
Connected	Steady blue on
Waiting for connection/ Connection failed	Flashing yellow

- Gateway indicator status (quick connect with camera)

Device status	Light status
Waiting for connection/ Connecting	Blue light flash
Connected	Blue light

- Camera indicator status

Device status	Light status
Connecting	Blue light flash
Connected	Steady blue on for 5 seconds then off
Charging	Steady red on
Charging complete	Steady green on

- Gateway reset button

Reset: Long press for 8 seconds, if the indicator flashes yellow, that means the gateway is successfully reset.

- Camera power button

Power on: Long press for 2 seconds, if the indicator flashes green once, that means the camera is on.

Power off: Long press for 2 seconds, if the indicator flashes red once, that means the camera is off.

Reset: Long press for 8 seconds, if the indicator flashes blue, that means the camera is successfully reset.

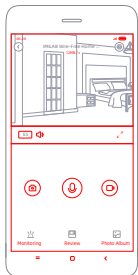
Playback

Playback feature is only available after a compatible microSD card is installed in the gateway. Once a MicroSD card has been installed and the security camera is turned on, videos will be recorded automatically.

In the IMILAB Wire-Free Home Security Camera control interface in the Mi Jia app, click "Playback" to enter the page, then select the time period you wish to view.

Real-Time Monitoring

Launch the Mi Jia app and select a connected "IMILAB Wire-Free Home Security Camera"- "IMILAB Wire-Free Camera Gateway" to monitor the surroundings in real-time. Through the camera's control interface, users can perform screen capture, screen record and remote communication, etc.

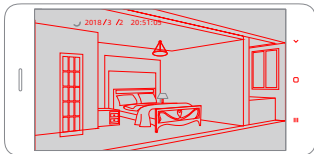


Note:

The diagram is for reference only. Actual displays will vary based on different versions of the Mi Home platform and your smartphone model.

Supporting Infrared Night Vision

The camera will be automatically switched to night vision mode by IR-CUT according to the ambient light changes that captured by the photosensor. With the incorporation of eight infrared illuminators, the security camera is able to view up to a distance of 9m and capture crystal clear images in the dark.



Infrared night vision mode sample

Note:

The diagram is for reference only. Actual displays will vary based on different versions of the Mi Home platform and your smartphone model.

Shared Remote Viewingt

Through the IMILAB Wire-Free Home Security Camera control interface in the Mi Jia app, you can set your security camera as a shared device under the General Settings menu, and invite your friends to view the camera remotely. Your friends will be required to download the Mi Jia app and log in with his/her Xiaomi account.

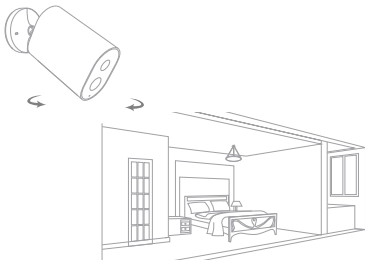


Note:

The diagram is for reference only. Actual displays will vary based on different versions of the Mi Home platform and your smartphone model.

Automatic Monitoring

- Configure this feature through the Mi Jia app "IMILAB Wire-Free Camera GateWay" - "IMILAB Wire-Free Home Security Camera" - "Automatic Monitoring".
- This device is able to detect movements within its field of view. Once movements are detected, a video is recorded and you will receive a notification. Users can customize the security time and set the alarm sensitivity, time interval, etc.



Precautions

- The suitable operating temperature range for this product is between -20°C ~ 50°C . Don't use the product in an environment with temperatures above or below the specified range.
- When charging, the operating temperature range for this product is between 0°C ~ 45°C . Don't charge the product in an environment with temperatures above or below the specified range.
- Using the product in a low temperature environment or charging status will affect its standby time. The actual standby time is related to the user's environment and habit.
- To improve the product's performance, please do not place the camera lens facing or next to a reflective surface, such as glass windows/doors and white walls, which will cause the image to appear overly bright in areas close to the camera and darker in areas further away, or cause the camera to produce white images.
- Please install the product in areas with Wi-Fi reception, and try to place the device where the Wi-Fi signal is strong. In addition, please keep the security camera away from metal

structures, microwave ovens, or other locations where signal strength may be impacted.

- Don't replace the battery in camera yourself—if not properly replaced, there is a danger of explosion.
- Battery (battery pack or batteries) must not be exposed to sunlight, fire, or similar overheating conditions.
- This product is a low power consumption camera with battery built-in. Don't use Real-Time Monitoring feature for long time when charging, in order to avoid battery life loss.

All diagrams are for reference only. The actual product may be slightly different with the diagrams due to the updates and upgrades, please prevail in kind.

Specifications

Name: IMILAB Wire-Free Home Security Camera

Lens Angle: 120°

Model: CMSXJ11A

Resolution: 1080P

Aperture: F 2.6

Power Input: 5 V \equiv 2 A

Net Weight: 270 g

Item Dimensions: 140.4 x 47 x 73 mm

Video Encoding: H.264

Operating Temperature: -20 °C ~ 50 °C

Name: IMILAB Wire-Free Camera GateWay

Power Input: 5 V \equiv 2 A

Model: CMSXJ11AG

Item Dimensions: 75 x 75 x 27 mm

Net Weight: 65 g

Expandable Memory: MicroSD card (up to 64 GB)

Wireless Connectivity: Wi-Fi IEEE 802.11 b/g/n 2.4 GHz

Wired Connection: A 10/100M Self-adaptive ethernet interface

Manufactured by: Shanghai Imilab Technology Co., Ltd.

Address: Room 908, No. 1, Lane 399, Shengxia Rd., China Pilot
Free Trade Zone, Shanghai, 201210, China

Service: help@imilab.com

For further information, please go to www.imilab.com

Business cooperation: globalmarketing@imilab.com