

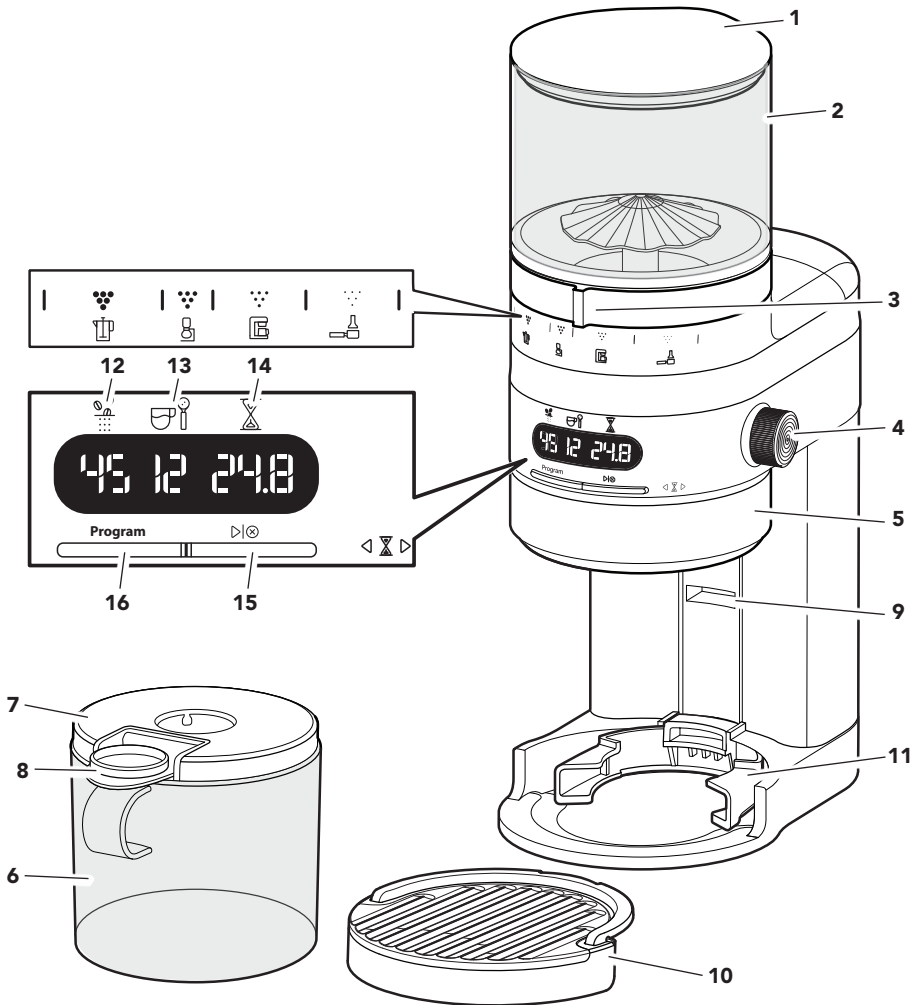
# KitchenAid

## Coffee Grinder 5KCG8433



<b>EN</b>	Use & Care manual	2	<b>NO</b>	Håndbok for bruk og vedlikehold	115
<b>DE</b>	Gebrauchs- und Pflegeanleitung	15	<b>FI</b>	Käyttö- ja huolto-opas	127
<b>FR</b>	Manuel d'utilisation et d'entretien	27	<b>DA</b>	Vejledning til anvendelse og vedligehold	139
<b>IT</b>	Manuale d'uso e manutenzione	43	<b>IS</b>	Notenda & Meðhöndlunar handbók	151
<b>NL</b>	Gebruiks- en onderhoudshandleiding	55	<b>RU</b>	Руководство по эксплуатации и уходу	163
<b>ES</b>	Manual de uso y cuidado	67	<b>PL</b>	Instrukcja obsługi i konserwacji	175
<b>PT</b>	Manual de utilização e manutenção	79	<b>CS</b>	Návod k použití a údržbě	187
<b>EL</b>	Εγχειρίδιο Χρήσης και Φροντίδας	91	<b>TR</b>	Kullanım ve Bakım kılavuzu	199
<b>SV</b>	Handbok för skötsel och användning	103	<b>AR</b>	دليل الاستخدام والعناية	1

# PARTS AND FEATURES



**NOTE:** The Top hopper holds a maximum of 283 g (10 oz) of coffee beans.\*

- |   |                      |    |                          |
|---|----------------------|----|--------------------------|
| 1 | Top hopper lid       | 9  | Portafilter holder guide |
| 2 | Top hopper           | 10 | Grounds catcher tray     |
| 3 | Grind size knob      | 11 | Portafilter holder       |
| 4 | Dose selection knob  | 12 | Grind size indicator     |
| 5 | Time adjustment knob | 13 | Dose selection indicator |
| 6 | Bottom hopper        | 14 | Grind time indicator     |
| 7 | Bottom hopper lid    | 15 | Start/Stop button        |
| 8 | Rubber stopper       | 16 | Program button           |

\*Capacity may vary depending on coffee type and roast.



## PRODUCT SAFETY

### Your safety and the safety of others are very important.

We have provided many important safety messages in this manual and on your appliance. Always read and obey all safety messages.



This is the safety alert symbol.

This symbol alerts you to potential hazards that can kill or hurt you and others.

All safety messages will follow the safety alert symbol and either the word "DANGER" or "WARNING." These words mean:

 **DANGER**

**You can be killed or seriously injured if you don't immediately follow instructions.**

 **WARNING**

**You can be killed or seriously injured if you don't follow instructions.**

All safety messages will tell you what the potential hazard is, tell you how to reduce the chance of injury, and tell you what can happen if the instructions are not followed.

## IMPORTANT SAFEGUARDS

**Before using the electrical appliance, the following basic precautions should always be followed including the following:**

1. Read all instructions. Misuse of appliance may result in personal injury.
2. European Union only: Appliances can be used by persons with reduced physical, sensory or mental capabilities or lack of experience and knowledge if they have been given supervision or instruction concerning use of the appliance in a safe way and understand the hazards involved. Children shall not play with the appliance.
3. European Union only: This appliance shall not be used by children. Keep the appliance and its cord out of reach of children.
4. Do not operate any appliance with a damaged cord or plug or after the appliance malfunctions, or is dropped or damaged in any manner. Contact the manufacturer at their customer service telephone number for information on examination, repair, or adjustment.
5. Be certain Top Hopper is securely locked in place before operating appliance.
6. Do not attempt to defeat the cover interlock mechanism.
7. The use of attachments not recommended or sold by the manufacturer may cause fire, electric shock or injury.
8. Check the Top hopper for the presence of foreign objects before using.
9. Do not use the appliance outdoors.
10. To protect against fire, electric shock, and personal injury do not immerse cord, plugs, or appliance in water or other liquids.



## PRODUCT SAFETY

11. This appliance is not intended for use by persons (including children) with reduced physical, sensory or mental capabilities, or lack of experience and knowledge, unless they have been given supervision or instruction concerning use of the appliance by a person responsible for their safety.
12. Children should be supervised to ensure that they do not play with the appliance.
13. Turn the appliance OFF, then unplug from the outlet when not in use, before assembling or disassembling parts and before cleaning. To unplug, grasp the plug and pull from the outlet. Never pull from the power cord.
14. Avoid contacting moving parts.
15. Do not let cord hang over edge of table or counter.
16. If the supply cord is damaged, it must be replaced by the manufacturer, its service agent or similarly qualified persons in order to avoid a hazard.
17. Switch off the appliance and disconnect from supply before changing accessories or approaching parts that move in use.
18. CAUTION: In order to avoid a hazard due to inadvertent resetting of the thermal cut-out, this appliance must not be supplied through an external switching device, such as a timer, or connected to a circuit that is regularly switched on and off by the utility.
19. Refer to the “Care and Cleaning” section for instructions on cleaning the surfaces in contact with food.
20. This appliance is intended to be used in household and similar applications such as:
  - staff kitchen areas in shops, offices and other working environments;
  - farm houses;
  - by clients in hotels, motels and other residential type environments;
  - bed and breakfast type environments”.

## SAVE THESE INSTRUCTIONS

### ELECTRICAL REQUIREMENTS

---

**Voltage:** 220-240 Volts AC

**Frequency:** 50-60 Hz

**Wattage:** 150 Watts

**NOTE:** If the plug does not fit in the outlet, contact a qualified electrician or service person. Do not modify the plug in any way. Do not use an adapter.

Do not use an extension cord. If the power supply cord is too short, have a qualified electrician or service person to install an outlet near the appliance.

The cord should be arranged so that it will not drape over the countertop or tabletop where it can be pulled on by children or tripped over unintentionally.





# PRODUCT SAFETY


## ELECTRICAL EQUIPMENT WASTE DISPOSAL

### Scrapping the product

- This appliance is marked in compliance with European Directive 2012/19/EU, Waste Electrical and Electronic Equipment (WEEE).

- By ensuring this product is disposed of correctly, you will help prevent potential negative consequences for the environment and human health, which could otherwise be caused by inappropriate waste handling of this product.



- The symbol  on the product or on the accompanying documentation indicates that it should not be treated as domestic waste but must be taken

to an appropriate collection centre for the recycling of electrical and electronic equipment.

For more detailed information about treatment, recovery and recycling of this product, please contact your local city office, your household waste disposal service, or the shop where you purchased the product.





## DECLARATION OF CONFORMITY

This appliance has been designed, constructed and distributed in compliance with the safety requirements of EC Directives: 2014/35/EU, 2014/30/EU, 2009/125/EC and 2011/65/EU (RoHS Directive).

# PRODUCT OVERVIEW

Your Burr Grinder has 70 unique grind size settings that are suitable for a range of brewing methods, from the finest setting for espresso to the coarsest setting for french press. By adjusting the Dose selection knob, you can choose from 1 to 2 shots of espresso or 1 to 12 cups of coffee.

## COFFEE GRIND SETTING CHART

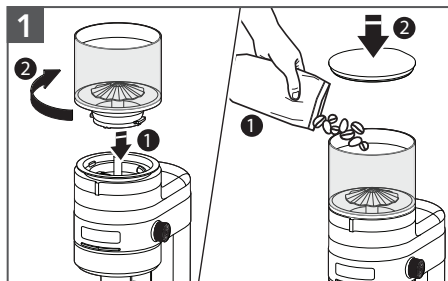
Coffee Type	 French Press	 Percolation	 Drip coffee	 Espresso
Grind Size	Coarse	Medium Coarse	Medium	Fine
Dose Selection	1 - 12 cups	1 - 12 cups	1 - 12 cups	1-2 shots
Use setting with	Bottom hopper	Bottom hopper	Bottom hopper	Portafilter holder



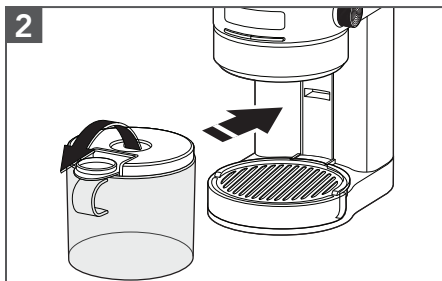


## PRODUCT ASSEMBLY

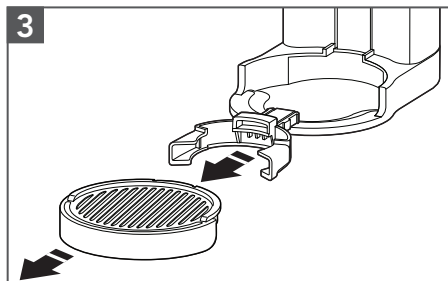
First, clean all parts and accessories. (See "Care and Cleaning" section). Place the product on a dry, flat, level surface such as a countertop or table.



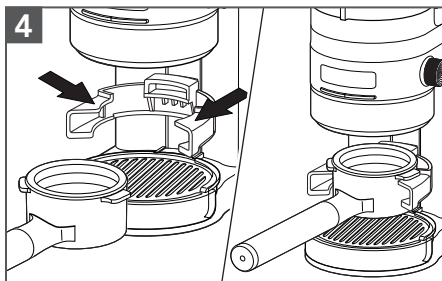
**1** Place the Top hopper onto the machine with the 'Lock icon' facing front. Rotate the Top hopper until it clicks into place. Add whole coffee beans. Place the Top hopper lid onto the Top hopper.



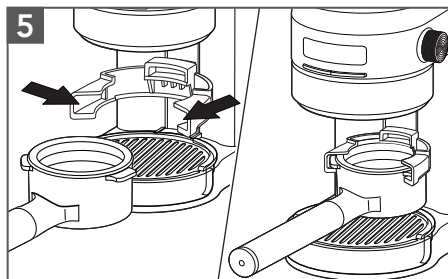
**2** **For grinding into the Bottom hopper:** Open the Rubber stopper and slide the Bottom hopper into position.



**3** **For grinding into a Portafilter:** Remove the Grounds catcher tray and then remove the Portafilter holder from its storage location. Insert Portafilter holder into Portafilter holder guide. Replace the Grounds catcher tray.



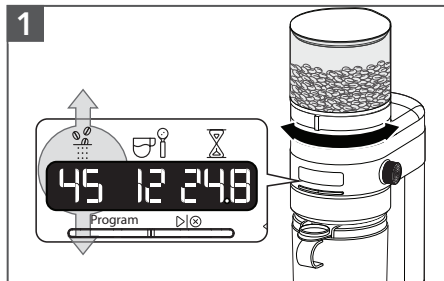
**4** **For grinding into the Portafilter:** If using a standard residential Portafilter (54 mm), insert it along the top guides of the Portafilter holder.



**5** **For grinding into the Portafilter:** If using a commercial Portafilter (58 mm), insert it into the middle guides of Portafilter holder.

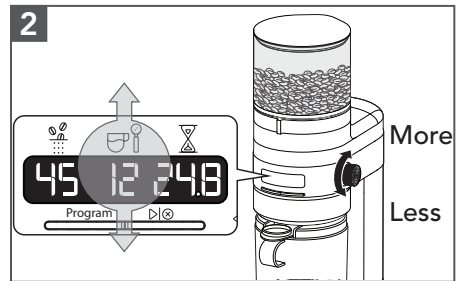


# PRODUCT USAGE



**Select Grind Size:** Refer to the Brew method icons on the machine. Rotate the Grind size knob to select a grind size (#) within the brew method range you are using. The selected grind size will be shown on the display.

**NOTE:** As grind size number increases the actual grind size decreases (1 is Coarse and 70 is fine).

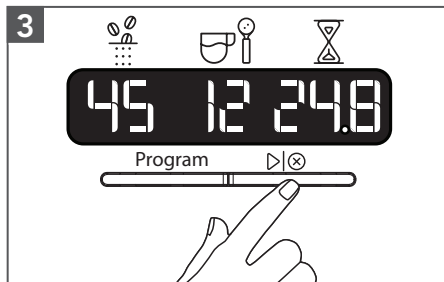


## Select Coffee Dose:

Rotate the Dose selection knob for the number of cups or shots (☞☞).

**French press** (☞☞), **Percolation** (☞☞), **Drip coffee** (☞☞): Select between 1 - 12 cups.

**Espresso** (☞☞): Select between 1 - 2 shots.



## To start grinding:

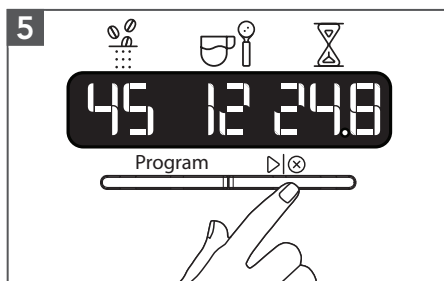
Press **Start/Stop** (▶|⊗) to begin grinding. Grinder will stop automatically when the time reaches 0 on the display.



## To pause during grinding:

Press **Start/Stop** (▶|⊗) to pause. To resume grinding press **Start/Stop** (▶|⊗).

**NOTE:** Grinder can remain paused for up to 15 seconds. After 15 seconds, the cycle will cancel and display will show the current selection.

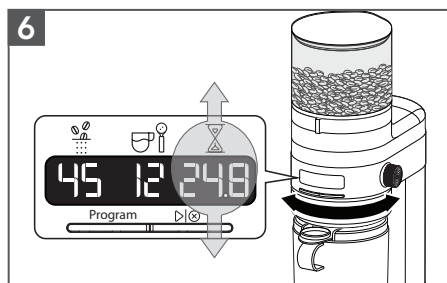


**To cancel the grinding cycle:** Press and hold **Start/Stop** (▶|⊗) for 3 seconds.

**TIP:** If Grind size knob is hard to rotate, run the machine while adjusting the size to remove any coffee grounds caught between the burrs.



## PRODUCT USAGE







### To change coffee amount for a dose:

If desired, rotate the Time adjustment knob to customise the desired amount of coffee for a particular selected dose. Increase the grinding time (⌘) to increase the coffee ground amount or decrease the grinding time to decrease the coffee ground amount.

## COFFEE GRIND TIME CHART

**NOTE:** There is a maximum grind time per coffee brew method that can be served. Below are the maximum grind times.

Coffee Type	 French Press	 Percolation	 Drip coffee	 Espresso
Maximum Grind Time (in seconds)	99.8	99.8	95.5	28.7

## PROGRAM FUNCTION

The Burr Grinder is equipped with programming functionality. This functionality allows you to save customised doses for each brew methods, based on grinding time (⌘).



**To save dose setting:** Once you have identified a desired dose time (⌘), press **Program** button to save the grind time you have selected.

Once a new grind time (⌘) for a dose within a brew method is saved, the Burr Grinder will automatically adjust the grind time up or down for all other doses within the brew method accordingly.

**NOTE:** To restore all factory dose settings, press and hold the **Program** button for 3 seconds.



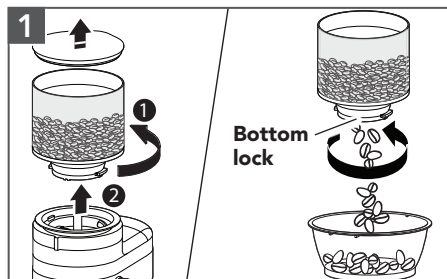




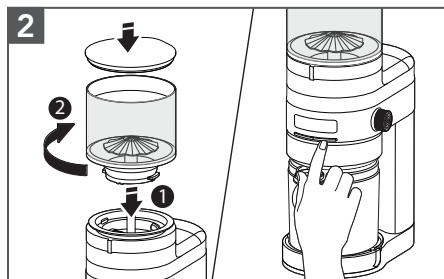
# PRODUCT USAGE

## MICRO-ADJUSTING THE CONICAL BURRS

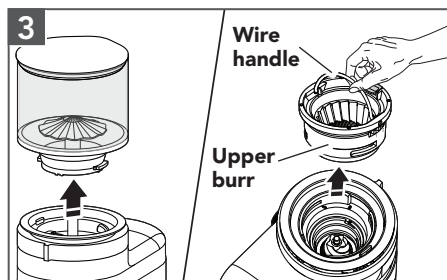
The Burr Grinder is equipped with an adjustable Upper burr. Making adjustments to this Burr expands the grind size range, allowing you to customise even further to meet your taste preference.



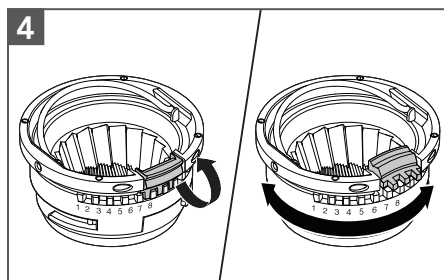
Twist and lift the Top hopper to remove.  
Twist the bottom lock to empty the Top hopper into another container.



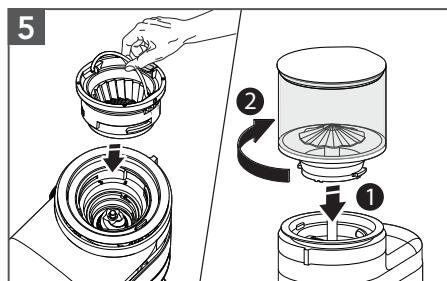
Replace the empty Top hopper with Lid and twist to lock in place.  
Press **Start/Stop** (▶|⊗) to run the grinder until empty.



Unplug the Burr Grinder. Remove the Top hopper and discard of any remaining coffee beans in the machine.  
Lift the Wire handle of the Upper burr.  
Twist to unlock and lift the Upper burr by using the Wire handle.



Lift the Upper burr micro adjustment latch.  
Then, rotate the Upper burr to desired setting and engage adjustment latch back into position.



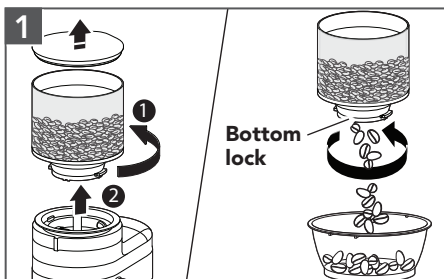
Return the Upper burr to the machine and twist to lock into position.  
Reattach the Top hopper.



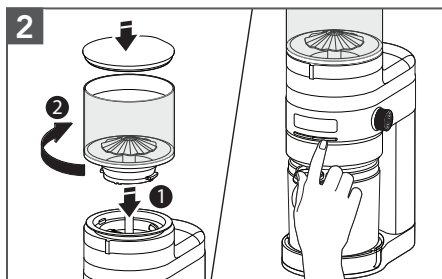


# CARE AND CLEANING

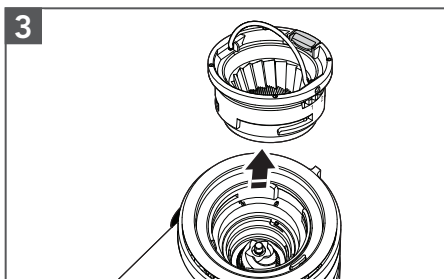
## CLEANING THE BURRS



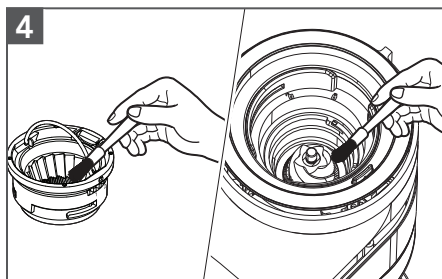
1 Twist and lift the Top hopper to remove. Twist the bottom lock to empty the Top hopper into another container.



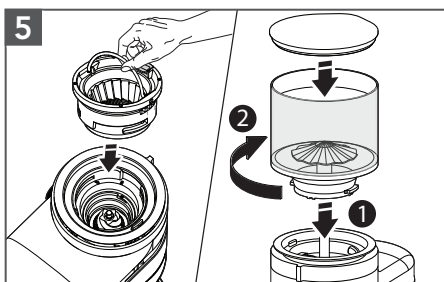
2 Replace the empty Top hopper and Lid. Press **Start/Stop** (▶|⊗) to run the grinder until empty. Then, unplug the burr grinder.



3 Remove the Top hopper, locate the wire handle on the Upper burr, rotate and lift the handle to remove Upper burr.



4 Clean the Upper burr with the cleaning brush. Clean the Lower burr with a brush or use a vacuum cleaner to remove coffee residue.



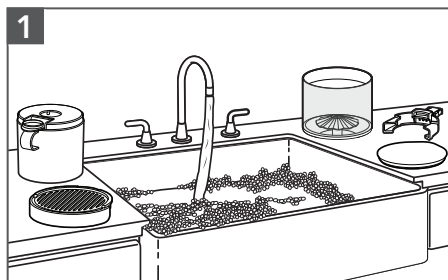
5 Align the Upper burr back in place and twist clockwise to secure. Replace the Top hopper and the Lid.



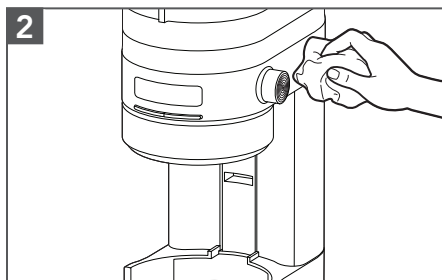


## CARE AND CLEANING

**IMPORTANT:** To avoid damage, never wash or immerse the main body of Burr Grinder, burrs, or power cord in water, or place in the dishwasher.



The Top hopper, Top hopper lid, Bottom hopper, Bottom hopper lid, Grounds catcher tray, and Portafilter holder can be cleaned with warm, soapy water, then rinse with clean water and dry with clean soft cloth.



Wipe clean the main body of Burr Grinder with a soft, damp cloth. Dry thoroughly.

## TROUBLESHOOTING GUIDE

Problem	Solution
The Burr Grinder display is not illuminated.	Your Burr Grinder might be in stand by mode. Press any button or turn any knob to wake up the Burr Grinder.
The Burr Grinder does not turn start.	Check if the Burr Grinder is securely plugged into an earthed outlet.
	If you have a circuit breaker box, make sure the circuit is closed.
If the Burr Grinder shows 3 dashes (---) on display.	It indicates that the Top hopper is not locked in place. See product assembly instructions for proper installation.
If the Burr Grinder does not turn On and display shows "Er2".	Your Burr Grinder is in a motor overload protection mode. Unplug the Burr Grinder, clean the burrs, reassemble the machine and securely plug into an earthed outlet.
If the Burr Grinder does not turn On and display shows "Er3".	Your Burr Grinder is in protection mode. Unplug the Burr Grinder and allow it to cool for 10 minutes before turning it back on.
If Coffee is not coming out from the grind outlet.	Ensure fresh coffee beans are in the Top hopper.
If the Burr Grinder is operating normally, but stops abruptly.	Stop the Burr Grinder. A coffee bean, may have jammed the burrs. Refer to "Care and Cleaning" section for details on cleaning the burrs.
The automatic dosing quantity is not to your liking.	Doses of coffee are programmable refer to the programming section for reference.
If the problem cannot be corrected.	See the "Terms of KitchenAid Guarantee ("Guarantee")" sections. Do not return the Burr Grinder to the retailer – retailers do not provide service. <b>NOTE:</b> Any other servicing should be performed by an authorised service representative.



# TERMS OF KITCHENAID GUARANTEE ("GUARANTEE")

## Covering U.K. - Ireland - South Africa - UAE

KitchenAid Europa, Inc., Nijverheidslaan 3, Box 5, 1853 Strombeek-Bever, Belgium ("Guarantor") grants the end-customer, who is a consumer, a Guarantee pursuant to the following terms.

### FOR U.K.:

The Guarantee applies in addition to and does not limit or affect the statutory warranty rights of the end-customer against the seller of the product. In summary, the Consumer Rights Act 2015 says products must be as described, fit for purpose and of satisfactory quality. During the expected lifespan of your product your legal rights entitle you to the following:

- Up to 30 days: if your product is faulty, then you can get an immediate refund.
- Up to six months: if your product can't be repaired or replaced, then you're entitled to a full refund, in most cases.
- Up to six years: if your product does not last a reasonable length of time you may be entitled to some money back.

These rights are subject to certain exceptions. For detailed information please visit the Citizens Advice website [www.adviceguide.org.uk](http://www.adviceguide.org.uk) or call 03454 04 05 06.

### FOR IRELAND:

The Guarantee applies in addition to and does not limit or affect the statutory warranty rights of the end-customer against the seller of the product under the European Communities (Certain Aspects of the Sale of Consumer Goods and Associated Guarantees Regulations 2003 (S.I. No. 11/2003)) and other enactments governing the sale of consumer goods.

### FOR SOUTH AFRICA:

The Guarantee applies in addition to and does not limit or affect the statutory warranty rights of the end-customer against the seller of the product. In summary, the Consumer Protection Act, 2008 says that products must be: (i) reasonably suitable for the purpose for which they are intended; (ii) in good working order, of good quality and free of any defects; (iii) useable and durable for a reasonable period of time, having regard to the use to which they would normally be put and to all the surrounding circumstances; and (iv) in compliance with any applicable standards or any other public regulations.

During the expected lifespan of your product and where the products are not purchased online, your legal rights will entitle you to the following:

- You will be entitled to a full refund, if you did not have the opportunity to examine the product before delivery and if you rejected delivery of the product on the basis that the type and quality of the product was not as reasonably expected or did not reasonably conform to the material specifications.
- Within 5 business days after delivery: you may rescind your purchase and request a refund, if your purchase resulted from direct marketing.
- Within 10 business days after delivery: you will be entitled to a full refund, if it is found that the product was unsuitable for a particular purpose specifically communicated to you by the Guarantor.
- Within 15 business days after delivery: you will be entitled to a refund if: (i) the product was not delivered to you; or (ii) if you returned the product to the Guarantor.
- Within 6 months after delivery: you will be entitled to a refund or a replacement product, if the product is defective or fails to operate in terms of its specifications.





# TERMS OF KITCHENAID GUARANTEE ("GUARANTEE")

Where you have purchased a product online your legal rights will be governed by the Electronic Communications and Transactions Act, 2002 and you will be entitled to the following:

- Within 7 days after conclusion of the transaction or after delivery: you may cancel your purchase without reason and without penalty.
- Within 30 days of the date of cancellation of the transaction: you will be entitled to receive a refund, if you have already made payment.
- You will only be liable for the direct costs of returning the product to the Guarantor.

## FOR UAE:

The Guarantee applies in addition to and does not limit or affect the statutory warranty rights of the end-customer against the seller of the product.

### 1) SCOPE AND TERMS OF THE GUARANTEE

a) The Guarantor grants the Guarantee for the products mentioned under Section 1.b) which a consumer has purchased from a seller or a company of the KitchenAid-Group within the following countries: U.K., Ireland, or South Africa, or the United Arab Emirates (UAE).

b) The Guarantee period depends on the purchased product and is as follows:

**5KCG8433 Two years full guarantee from date of purchase.**  
**5KCG8433 (Artisan) Five years full guarantee from date of purchase.**

c) The Guarantee period commences on the date of purchase, i.e. the date on which a consumer purchased the product from a dealer or a company of the KitchenAid-Group.

d) The Guarantee covers the defect-free nature of the product.

e) The Guarantor shall provide the consumer with the following services under this Guarantee, at the choice of the Guarantor, if a defect occurs during the Guarantee period:

- Repair of the defective product or product part, or
- Replacement of the defective product or product part. If a product is no longer available, the Guarantor is entitled to exchange the product for a product of equal or higher value.

f) If the consumer wishes to make a claim under the Guarantee, the consumer has to contact the country specific KitchenAid service centres or the Guarantor directly at KitchenAid Europa, Inc. Nijverheidslaan 3, Box 5, 1853 Strombeek-Bever, Belgium;

Email-Address U.K.: [CONSUMERCARE.UK@kitchenaid.eu](mailto:CONSUMERCARE.UK@kitchenaid.eu)

Email-Address IRELAND: [CONSUMERCARE.IE@kitchenaid.eu](mailto:CONSUMERCARE.IE@kitchenaid.eu)

Toll Free Number U.K. & IRELAND: **00 800 381 040 26**

## FOR SOUTH-AFRICA:

### Our local KitchenAid Distributor:

KitchenAid Africa  
PO Box 52102  
V&A Waterfront  
Cape Town  
8002





# TERMS OF KITCHENAID GUARANTEE ("GUARANTEE")

## Contact our distributor:

Telephone: +27 21 555 0700

You can contact our Customer Service Centre for Small Domestic Appliances from 8.30 am to 1.00pm and from 1.30 pm to 5.00 pm or write to us at the following address: [hello@kitchenaidafrica.com](mailto:hello@kitchenaidafrica.com)

## FOR UAE:

### AL GHANDI ELECTRONICS.

POST BOX NO. 9098,

DUBAI, UNITED ARAB EMIRATES

Toll free number: +971 4 2570007

g) The costs of repair, including spare parts, and any postage costs (if applicable) for the delivery of a defect-free product or product part shall be borne by the Guarantor. The Guarantor shall also bear the postage costs for returning the defective product or product part if the Guarantor or the country specific KitchenAid customer service centre requested the return of the defective product or product part. However, the consumer shall bear the costs of appropriate packaging for the return of the defective product or product part.

h) To be able to make a claim under the Guarantee, the consumer must present the receipt or invoice of the purchase of the product.

## 2) LIMITATIONS OF THE GUARANTEE

a) **The Guarantee applies only to products used for private purposes and not for professional or commercial purposes.**

b) **The Guarantee does not apply in the case of normal wear and tear, improper or abusive use, failure to follow the instructions for use, use of the product at the wrong electrical voltage, installation and operation in violation of the applicable electrical regulations, and use of force (e.g. blows).**

c) **The Guarantee does not apply if the product has been modified or converted, e.g. conversions from 120 V products to 220-240 V products.**

d) **The provision of Guarantee services does not extend the Guarantee period, nor does it initiate the commencement of a new Guarantee period. The Guarantee period for installed spare parts ends with the Guarantee period for the entire product.**

e) **FOR SOUTH-AFRICA & UAE ONLY:**

**Further or other claims, in particular claims for damages, are excluded unless liability is mandatory by law.**

After expiry of the Guarantee period or for products for which the Guarantee does not apply, the KitchenAid customer service centres are still available to the end-customer for questions and information.

Further information is also available on our website:

- For U.K. & Ireland [www.kitchenaid.eu](http://www.kitchenaid.eu)

- For South-Africa: [www.kitchenaidafrica.com](http://www.kitchenaidafrica.com)

- For UAE: [www.KitchenAid-MEA.com](http://www.KitchenAid-MEA.com)

## PRODUCT REGISTRATION

Register your new KitchenAid appliance now: <http://www.kitchenaid.eu/register>

©2020 All rights reserved.

