



# Nest Cam with Floodlight Installation instructions Dummy

(US/CA-ENGLISH)  
July 2021

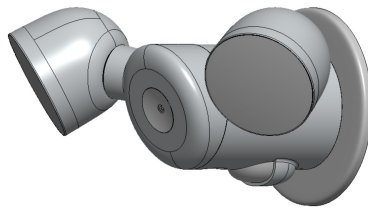




# Parts and tools needed



**Nest Camera Dummy**  
GA02840-US



**Floodlight Dummy**  
GA02814-US



**Mounting Plate  
And Cover**



**Winged nuts x4**



**Pogo Screw**



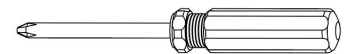
**Hex key**



**Anti-theft Screw**



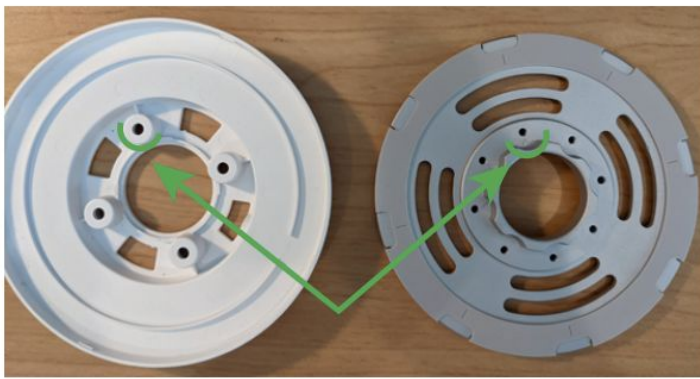
**4x 35mm M3 Screws**



**Phillips Screwdriver**  
*Not Included*



# Installing Nest Cam with Floodlight Dummy

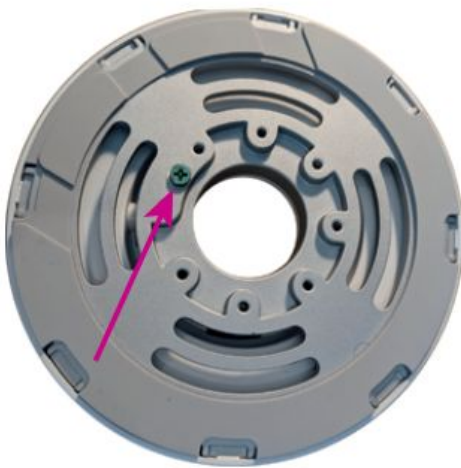


Step 1

## Step 1

Snap the white cover and the mounting plate together by aligning any of the u-shaped indents on the front of the mounting plate to the round screw holes on the back of the cover.

Note: Use a flathead screwdriver if you need to separate the plates in the future.



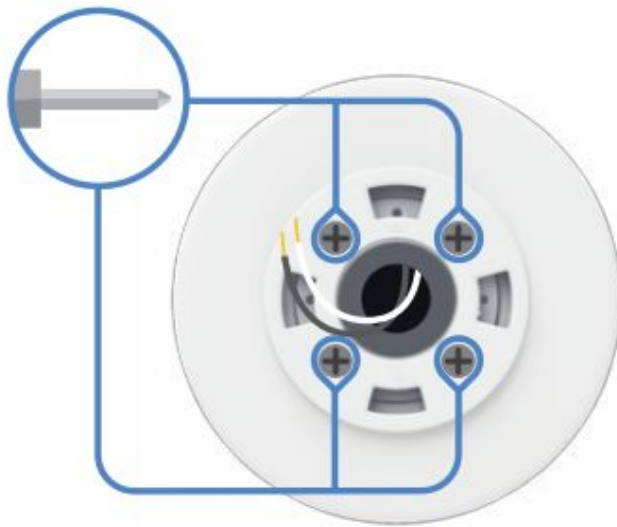
Step 2

## Step 2

On the back of the mounting plate, use a Phillips screwdriver to tighten the green screw. This screw is not needed for the floodlight dummy but this step is necessary in order for the mounting plate to sit flush.



# Installing Nest Cam with Floodlight Dummy

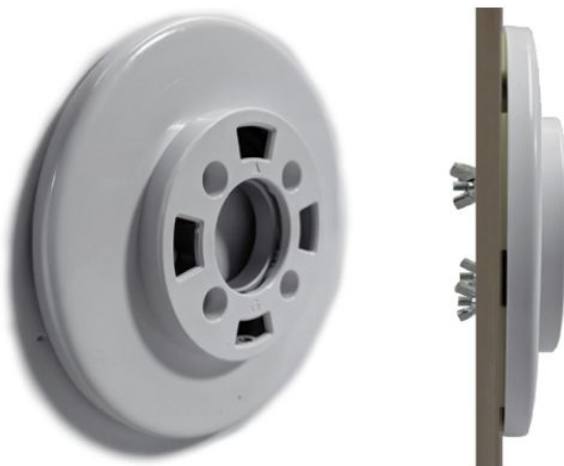


**Step 3**

### Step 3

Insert the provided (4x) 35mm M3 screws through the front of the mounting plate using a Phillips screwdriver.

*Wires are for illustration purposes only.*



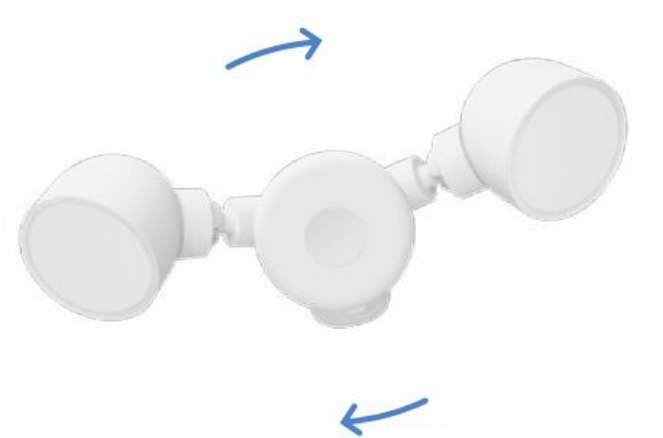
**Step 4**

### Step 4

With the arrow on the mounting plate pointing upward and the G upright, push the mounting plate with the screws into the fixture and secure on the other side with the provided (4x) wing nuts.



# Installing Nest Cam with Floodlight Dummy



**Step 5**

## **Step 5**

Position the floodlight slightly counterclockwise over the mounting plate and align the teeth to the corresponding cutouts on the mounting plate. To lock it in place, press the floodlight into the mounting plate and twist the floodlight clockwise until you hear a click.



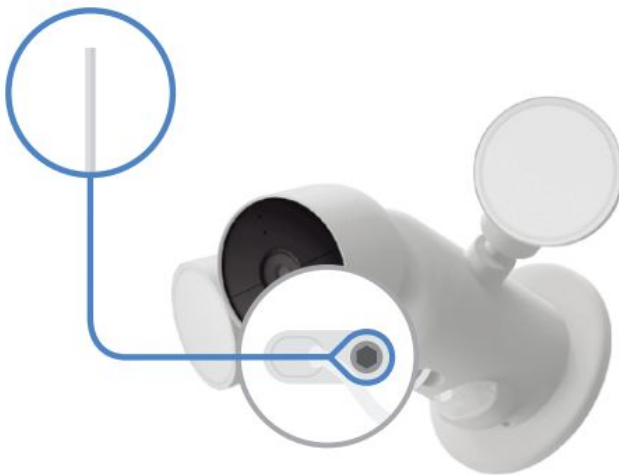
**Step 6**

## **Step 6**

Connect the power cable from the front of the floodlight to the bottom of Nest Cam and attach the camera to the magnetic plate on the floodlight. **Caution: the magnet is strong.**



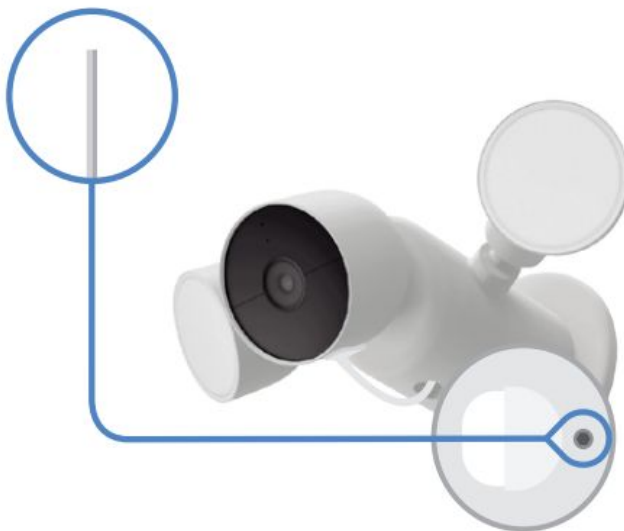
# Installing Nest Cam with Floodlight Dummy



**Step 7**

## **Step 7**

Secure the camera to the floodlight by inserting the larger security screw into the power cable. Use the provided hex key.



**Step 8**

## **Step 8**

Secure the floodlight to the mounting plate by inserting the smaller security screw into the bottom of the floodlight near the mounting plate. Use the provided hex key.



# Installing Nest Cam with Floodlight Dummy



**Step 9**

## Step 9

Remove the rubber pieces protecting the light hinges on both sides of the floodlight and remove the clear protective film on the underside of the floodlight body.



**Step 10**

## Step 10

Position the lights and camera how you would like to display them, ideally with Nest Cam pointing at a downward angle.