

# eufy Motion Sensor E20

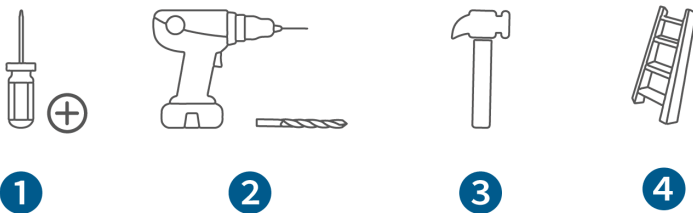
eufy Motion Sensor E20 is a security device that can protect the interior of your home by detecting motion. As soon as motion is detected, the sensor will send an alert to your HomeBase (not included), which in turn will send an alert notification straight to your smartphone.

View the [How-to Video](#)

## What's in the Box

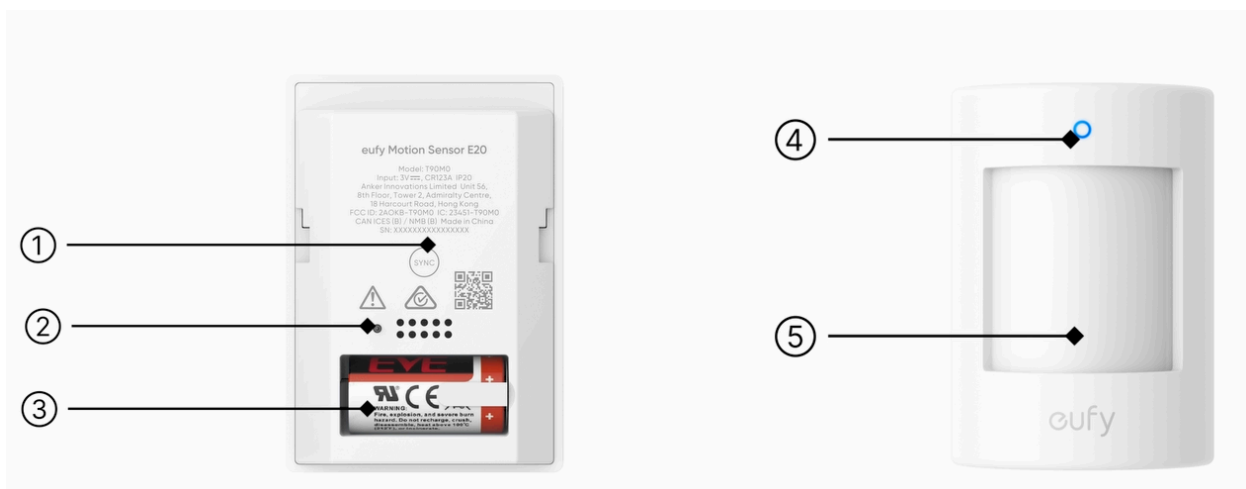
- Motion Sensor (CR123A battery pre-installed)
- 3M Adhesive
- Mounting Bracket (Pre-installed on the sensor)
- Mounting Screws
- Quick Start Guide

## Tools You Will Need (Not Provided)



1. Phillips Screwdriver
2. Power Drill & Drill Bit: 15/64 in
3. Hammer
4. Ladder

## At a Glance



1. SYNC Button
2. Tamper Switch
3. Battery Compartment
4. LED Indicator

## 5. Fresnel Lens

# Set Up the Device

💡 Before setting up the device, make sure you've completed the setup of the HomeBase.

1. Download the [eufy app](#), and sign in or create an account.



2. Tap the + icon on the home screen, and you can either:
  - a. Scan the QR code on the device, or
  - b. Select **Alarm System** > **eufy Motion Sensor E20** in the Device Family, and follow in-app instructions to complete the setup.

💡 Pull out the insulation sheet and make sure the LED blinks blue when pairing.



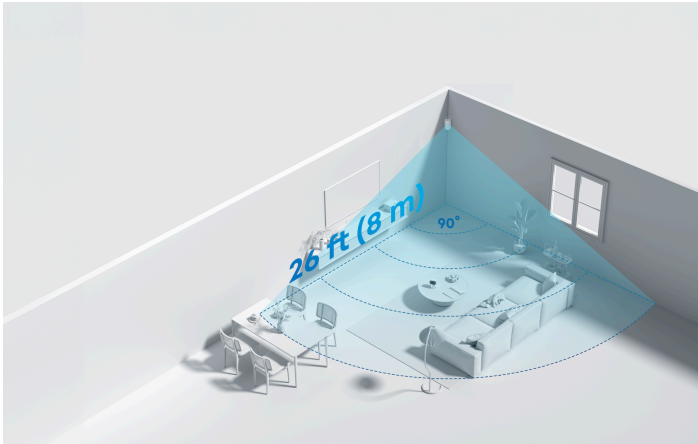
If not, slide to remove the mounting bracket, and press the SYNC button for 2 seconds until it blinks blue.



# Mount the Device

## Step 1 Choose a Location

Detection Range: 90°, 26 ft (8 m)



Recommended:

- Entryways, doors, living rooms, bedrooms, and open spaces
- Height: 6.5 ft to 7.5 ft (2 m to 2.3 m) from the floor
- Best in the corner
- Place at an angle, not directly facing the door, for optimal field of view
- **Avoid Direct Light Sources:** Avoid heat sources like **windows, heaters, fireplaces, and air vents** to prevent false triggers.
- **Face Across the Path:** PIR sensors work best when movement happens **across their field of view**, not directly toward them

## Step 2 Test the Device

1. Temporarily mount the sensor to your desired position.
2. Leave the monitoring space for at least 1 minute to allow the motion sensor to rescan the space.
3. Enter the space and walk in front of the motion sensor until the LED blinks red. An event will be displayed in the app.

## Step 3 Mount the Device

### Option 1: Secure with 3M Adhesives - For Smooth Surfaces (steel, marble, glass, etc.)

1. Clean the surface with a cloth or tissue and wait until the surface is completely dry before installing.
  - Dust residue may affect the adhesion of 3M adhesive.
  - If there is any oil or dirt on the surface, clean it with alcohol before mounting.

2. Attach the 3M adhesives to the back of the mounting bracket.



3. Peel the release paper off the back, and press the sensor firmly against your desired position.



**⚠ Surfaces not suitable for 3M adhesive mounting:**

- Newly painted walls
- Rough or uneven surfaces (such as concrete, unfinished wooden surfaces)
- Wet surfaces or surfaces with dirt
- Wallpaper or coated surfaces

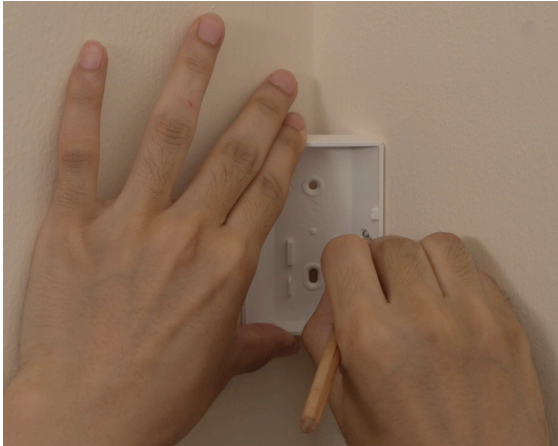
## Option 2: Secure with Screws

1. Slide to remove the motion sensor from the mounting bracket

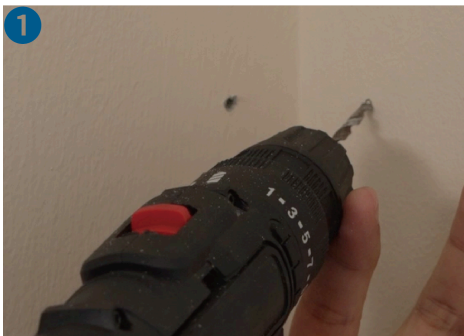


2. Mark the screw holes with a pencil.

💡 There are 2 extra knockout holes on the bracket. Remove the knockouts if needed.



3. Drill holes and insert anchors.



4. Insert the screws.



5. Slide to mount the motion sensor onto the bracket.



## LED Indication

**Blinking Blue:** Pair Mode

**Solid Blue for 5 seconds:** Paired / Connected to the network successfully

**Red flashes twice quickly:** Sensor triggered

**Red flashes every 60 seconds:** Low battery


Flashing **Red** and **Blue** alternately: Reset Mode or during OTA (the sensor cannot detect motion in this status)

**Red** and **Blue** flashes alternately twice: Offline / Communication failed

## Pet Mode

In Pet Mode, the motion sensor will effectively detect human movement while reducing false alerts triggered by pets less than 80 lb.

You can enable Pet Mode in the app:

Select the motion sensor on the home screen, the  icon in the upper right corner, and select Pet Mode to switch it on.

If pet immunity is desired, mount the sensors where animals cannot come within six feet of the detectors by climbing on furniture or other objects. Also, do not aim the detector at a stairway or furniture, or other objects that an animal can climb.

## Tamper Alarm

When removed in Armed mode, the sensor triggers an alert and notify the security system.

# Replacing the Battery

Regularly check the battery level and replace when needed.

Slide to remove the motion sensor from the mounting bracket, and replace with a CR123A battery.



## Specification

Dimension: 80\*58.5\*46.5 mm

Connectivity: Sub-1G

Detection Range: < 90°, 26 ft (8 m)

Sensor: PIR

Battery: CR123A

Alarm Interval: At most once per minute

Working Temperature: 0°C to 50°C (32°F to 122°F)

Storage Temperature: -20°C to 60°C (-4°F to 140°F)

Working Humidity: 0 to 85%