

# eufy Entry Sensor E20

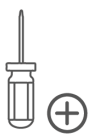
An entry sensor is a crucial component of a security system designed to detect unauthorized access through doors, windows, or other entry points. It consists of two parts: a magnetic sensor and a magnet. When the door or window is closed, the two parts remain aligned, creating a secure circuit. If the door or window is opened, breaking the magnetic connection, the sensor triggers an alert, notifying the security system.

[View the How-to Video](#)

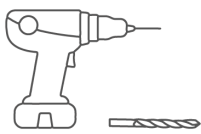
## What's in the Box

- Entry Sensor (CR123A battery pre-installed)
- 3M Adhesive
- Mounting Bracket (Pre-installed on the sensor)
- Mounting Screws
- Quick Start Guide

## Tools You Will Need



1



2



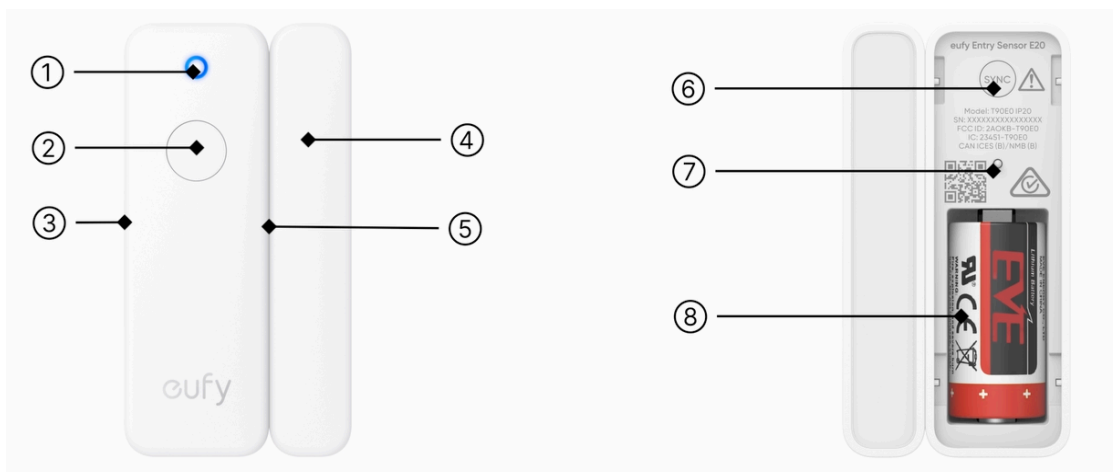
3



4

1. Phillips Screwdriver
2. Power Drill & Drill Bit: 15/64 in
3. Hammer
4. Ladder

## At a Glance



1. LED Indicator
2. Bypass Button

3. Magnetic Sensor (Left)
4. Magnet
5. Magnetic Sensor (Right)
6. SYNC Button
7. Tamper Switch
8. Battery Compartment

## Set Up the Device

💡 Before setting up the device, make sure you've completed the setup of the HomeBase.

1. Download the [eufy app](#), and sign in or create an account.



2. Tap the + icon on the home screen, and you can either:
  - a. Scan the QR code on the device, or
  - b. Select **Alarm System** > **eufy Entry Sensor E20** in the Device Family, and follow in-app instructions to complete the setup.

💡 Pull out the insulation sheet and make sure the LED blinks blue when pairing.



If not, remove the mounting bracket, and press the SYNC button for 2 seconds until it blinks blue.



# Mount the Device

## Step 1 Choose a Location

- Doors, windows, or other entry points where intrusions are most likely.
- Ensure both parts align properly when the door/window is closed.
- For **doors**, install at the **top corner**, where it's less likely to be tampered with.
- For **windows**, install on the **side or top**, depending on the window type (sliding or casement).
- Avoid installing near **metal surfaces**, which may interfere with the sensor's wireless signal.

## Step 2 Test the Device

1. Temporarily mount the sensor to your desired position.
2. Open and close the door or the window (whichever the entry sensor is mounted) until the LED blinks red. An event will be displayed in the app.

## Step 3 Mount the Device

### Option 1: Secure with 3M Adhesives - For Smooth Surfaces (steel, marble, glass, etc.)

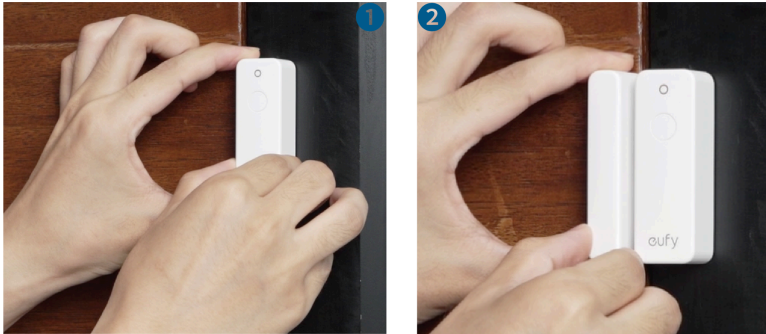
1. Clean the surface with a cloth or tissue and wait until the surface is completely dry before installing.
  - Dust residue may affect the adhesion of 3M adhesive.
  - If there is any oil or dirt on the surface, clean it with alcohol before mounting.
2. Attach the 3M adhesives to the back of the mounting bracket.



3. Peel the release paper off the back, and press the sensor and the magnet firmly against your desired position.

💡 Place the **sensor (larger part)** on the **stationary frame** and the **magnet (smaller part)** on the **movable section** (door or window).

💡 The sensor (larger part) contains magnetic sensors on both sides, thus, the entry sensor can function properly whether you place the magnet (smaller part) on the left or right side of the sensor (larger part), compatible with various types of doors and windows.



💡 Ensure the gap between the entry sensor and the magnet is no more than 1.5 in (38 mm).



⚠️ Test the alignment before finalizing the installation by opening and closing the door/window to ensure proper activation.

### Option 2: Secure with Screws

1. Remove the motion sensor from the mounting bracket
2. Mark the screw holes with a pencil.
3. Drill holes and insert anchors.
4. Insert the screws.
5. Press to mount the entry sensor onto the bracket.

## LED Indication

**Blinking Blue:** Pair Mode

**Solid Blue for 5 seconds:** Paired / Connected to the network successfully

**Red flashes twice quickly:** Sensor triggered

**Red flashes every 60 seconds:** Low battery

Flashing **Red** and **Blue** alternately: Reset Mode or during OTA (the sensor cannot detect events in this status)

**Red** and **Blue** flashes alternately twice: Offline / Communication failed

## Trigger Alarm

When armed, opening a door or window will trigger the sensor and alert the security system.

## Bypass

Press the bypass button for 2 seconds, and the LED indicator will flash blue for 2 minutes, indicating the sensor is in Bypass mode. In this 2-minute period, you can open the door and go out without triggering the alarm while the system is armed. When the indicator is dimmed after 2 minutes, the sensor will exit the Bypass mode, and the door monitoring will be triggered again.

## Tamper Alarm

When removed in Armed mode, the sensor triggers an alert and notify the security system.

## Replacing the Battery

Regularly check the battery level and replace when needed.

Slide to remove the motion sensor from the mounting bracket, and replace with a CR123A battery.



## Specifications

Dimension: 73\*24.6\*21.6 mm (Sensor); 73\*14\*21.6 mm (Magnet)

Connectivity: Sub-1G

Battery: CR123A

Working Temperature: 0°C to 50°C (32°F to 122°F)

Storage Temperature: -20°C to 60°C (-4°F to 140°F)